



GAIDAR  
INSTITUTE  
FOR ECONOMIC  
POLICY

# MODEL CALCULATIONS OF SHORT-TERM FORECASTS OF RUSSIAN ECONOMIC TIME SERIES

09/2021

M.Turuntseva, E.Astafieva, M.Bayeva, A.Bozhechkova, A.Buzaev,  
T.Kiblitskaya, Yu.Ponomarev and A.Skrobotov

INTRODUCTION TO ALL THE ISSUES.....	2
INDUSTRIAL PRODUCTION AND RETAIL SALES .....	3
FOREIGN TRADE INDEXES .....	5
PRICE DYNAMICS .....	6
MONETARY INDEXES .....	9
INTERNATIONAL RESERVES .....	10
FOREIGN EXCHANGE RATES.....	10
LIVING STANDARD INDEXES .....	11
EMPLOYMENT AND UNEMPLOYMENT .....	11
ANNEXES.....	12

## INTRODUCTION TO ALL THE ISSUES

This paper presents calculations by researchers at the Gaidar Institute<sup>1</sup> of economic indicators derived from time series models for the period *over October of 2021 to March of 2022*.<sup>2</sup> The forecasting method belongs to the group of *formal* or *statistical* methods. In other words, the calculated values neither express the *opinion* nor the *expert evaluation* of the researcher, but rather, they are calculations of future values for a specific economic indicator derived by formal ARIMA( $p, d, q$ )-models, given a prevailing trend and divergences, in some cases, by a significant amount. The forecasts here are inertial in nature because the respective models rely upon the dynamics of the data registered prior to the moment of forecasting and depend too heavily on the trends, which are typical of the time series in the period immediately preceding the forecasted time horizon. These calculations of future values of economic indicators for the Russian Federation can be used in making economic policy decisions, provided that the general trends that were observed prior to forecasting for each indicator remain the same, i.e. prevailing long-term trends will see no serious shocks or changes in the future.

Despite that there is a great deal of data available on the period preceding the crisis of 1998, models of forecasting were analyzed and constructed using only the time horizon which followed August 1998. This can be explained by the findings of previous studies<sup>3</sup>, which concluded, among other key inferences, that the quality of forecasts deteriorated where data on the pre-crisis period was used. Additionally, it currently seems incorrect to use even shorter series (following the crisis of 2008), because statistical characteristics of models based on such a short time horizon are very poor.

Models for the economic indicators in question were evaluated using standard methods of time series analysis. Initially, the correlograms of the studied series and their first differences were analyzed in order to determine the maximum number of delayed values to be included in the specifications of a model. Then, the results of analyzed correlograms served as the basis for testing all the series for weak stationarity (or stationarity around the trend) using the Dickey–Fuller test. In some cases, the series were tested for stationarity around the segmented trend using Perron and Zivot–Andrews tests for endogenous structural changes.<sup>4</sup>

The series were broken down into weak stationary, stationary near the trend, stationary near the trend with structural change or difference stationary, and then models, which corresponded to each type (regarding the levels and including, if necessary, the trend or segmented trend or differences), were evaluated. The Akaike and Schwartz information criteria, the properties of models' residuals (lack of autocorrelation, homoscedasticity and normality) and the quality of the in-sample-forecasts based on these models were used to choose the best model. Forecast values were calculated for the best of the models constructed for each economic indicator.

Additionally, the Bulletin presents future monthly values of the CPI, calculated using models developed at the Gaidar Institute and volumes of import/export estimates between all countries, calculated using structural models (SM). Forecast values based on structural models may, in some cases, produce better results than ARIMA-models do, because structural models are constructed by adding dynamics of exogenous variables. Besides, the use of structural forecasts in making aggregated forecasts (i.e. forecasts obtained as average value from several models) may help make forecast values more accurate.

<sup>1</sup> See, for example, R.M. Entov, S.M. Drobyshevsky, V.P. Nosko, A.D. Yudin. *The Econometric Analysis of the Time Series of the Main Macroeconomic Indexes*. Moscow, IET, 2001; R.M. Entov, V.P. Nosko, A.D. Yudin, P.A. Kadochnikov, S.S. Ponomarenko. *Problems of Forecasting of Some Macroeconomic Indexes*. Moscow, IET, 2002; V. Nosko, A. Buzaev, P. Kadochnikov, S. Ponomarenko. *Analysis of the Forecasting Parameters of Structural Models and Models with the Outputs of the Polls of Industries*. Moscow, IET, 2003; M.Yu. Turuntseva and T.R. Kiblitckaya, *Qualitative Properties of Different Approaches to Forecasting of Social and Economic Indexes of the Russian Federation*. Moscow, IET, 2010.

<sup>2</sup> Given that from early 2019 Rosstat does not release monthly data on indexes of real disposable cash income of the population, commencing from issue 8/2019 we release forecasts in quarter terms for 2 quarters ahead.

<sup>3</sup> Ibid.

<sup>4</sup> See.: Perron, P. Further Evidence on Breaking Trend Functions in Macroeconomic Variables, *Journal of Econometrics*, 1997, 80, p. 355–385; Zivot, E. and D.W.K. Andrews. Further Evidence on the Great Crash, the Oil-Price Shock, and Unit-Root Hypothesis. *Journal of Business and Economic Statistics*, 1992, 10, p. 251–270.

## INDUSTRIAL PRODUCTION AND RETAIL SALES

The dynamic Consumer Price Index was modeled using theoretical assumptions arising from monetary theory. The following were used as explanatory variables: money supply, output volume, the dynamics of the ruble-dollar exchange rate, which reflects the dynamics of alternative cost of money-keeping. The model for the Consumer Price Index also included the price index in the electric power industry, because manufacturers' costs rely heavily on this indicator.

The baseline indicator is the real exchange rate, which can influence the value of exports and imports, and its fluctuations can result in changes to the relative value of domestically-produced and imported goods, though the influence of this indicator turns out to be insignificant in econometric models. Global prices of exported resources, particularly crude oil prices, are the most significant factor determining the dynamics of exports: a higher price leads to greater exports. The level of personal income in the economy (labor costs) was used to describe the relative competitive power of Russian goods. Fictitious variables D12 and D01 – equal to one in December and January and zero in other periods – captured seasonal fluctuations. In regard to imports, an increase in personal and corporate incomes triggers higher demand for all goods, including imported ones. Real disposable cash income reflects personal income; the Industrial Production Index reflects corporate income.

Forecast values of foreign exchange rates were also calculated using structural models of their dependence on global crude oil prices.

Forecast values of explanatory variables, which are required for forecasting on the basis of structural models, were calculated using ARIMA( $p, d, q$ )-models.

The paper also estimates values of the Industrial Production Index, the Producer Price Index and the Total Unemployment Index using Gaidar Institute business survey responses. Empirical studies show<sup>1</sup> that the use of business surveys as explanatory variables<sup>2</sup> in forecasting models can make forecasting more accurate on average. Future values of these indicators were calculated using ADL-models (seasonal autoregressive delays were added).

The Consumer Price Index and the Producer Price Index are also forecast using large datasets (factor models – FM). The construction of factor models relies basically on the evaluation of the principal components of a large dataset of socio-economic indicators (112 indicators in this case). The lags of these principal components and the lags of the explanatory variable are used as explanatory variables in these models. A quality analysis of the forecasts obtained for different configurations of the factor models was used to choose a model for the CPI, which included 9<sup>th</sup>, 12<sup>th</sup> and 13<sup>th</sup> lags of the four principal components, as well as 1<sup>st</sup> and 12<sup>th</sup> lags of the variable itself, and a model for the PPI, which included 8<sup>th</sup>, 9<sup>th</sup> and 12<sup>th</sup> lags of the four principal components, as well as 1<sup>st</sup>, 3<sup>rd</sup> and 12<sup>th</sup> lags of the variable itself.

All calculations were performed using the Eviews econometric package.

## INDUSTRIAL PRODUCTION AND RETAIL SALES

### Industrial production

*The forecast for October 2021 to March 2022 is based on monthly indexes of industrial production by the Federal State Statistics Service (Rosstat) from January 2002 to July 2021, and on base indexes of industrial production by the National Research University Higher School of Economics (NRU HSE<sup>3</sup>) over the period from January 2010 to August 2021 (the corrected value of January 2010 was equal to 100%). The forecast values of the series were calculated on the basis of ARIMA-class models. The forecasts by Rosstat and the NRU HSE industrial production indexes are calculated using business surveys (BS) as well. The results are shown in Table 1.*

<sup>1</sup> See, for example: V. Nosko, A. Buzaev, P. Kadochnikov, S. Ponomarenko. *The Analysis of Forecasting Parameters of Structural Models and Models with Business Surveys' Findings*. Moscow, IEP, 2003.

<sup>2</sup> Used as explanatory variables were the following series of the business surveys: the current/expected change in production, the expected changes in the solvent demand, the current/expected price changes and the expected change in employment.

<sup>3</sup> The indexes in question are calculated by E.F. Baranov and V.A. Bessonov.

# MODEL CALCULATIONS OF SHORT-TERM FORECASTS...

Table 1

Calculations of forecast values of the industrial production indexes<sup>1</sup> (%)

Month	Index of industrial production				IIP for mining		IIP for manufacturing		IIP for utilities (electricity, water, and gas)		IIP for food products		IIP for coke and petroleum		IIP for primary metals and fabricated metal products		IIP for machinery	
	Rosstat		NRU HSE		Rosstat	NRU HSE	Rosstat	NRU HSE	Rosstat	NRU HSE	Rosstat	NRU HSE	Rosstat	NRU HSE	Rosstat	NRU HSE	Rosstat	NRU HSE
	ARIMA	BS	ARIMA	BS														
Expected growth on the respective month of the previous year																		
Oct 21	5.5	4.6	3.5	4.7	5.3	5.1	5.2	4.5	7.2	8.1	4.9	3.4	9.4	13.5	0.2	0.5	16.3	19.4
Nov 21	4.8	4.5	2.5	4.5	4.1	3.6	3.9	4.2	5.9	7.4	5.4	4.3	5.1	9.5	4.6	9.9	5.7	-4.2
Dec 21	1.0	1.5	-0.8	2.0	2.8	3.4	1.7	-0.2	2.7	3.4	4.1	4.8	1.4	8.7	3.9	10.0	2.0	3.1
Jan 22	4.7	5.1	1.9	3.7	4.2	4.4	6.6	4.3	3.5	2.1	5.1	5.5	3.4	7.0	6.3	7.8	22.8	14.9
Feb 22	4.9	5.1	1.5	3.8	4.6	4.3	4.8	3.7	1.3	-1.1	5.6	5.5	2.6	5.4	7.1	9.9	11.4	10.8
Mar 22	1.3	4.3	-0.9	2.8	2.2	2.9	2.9	1.7	2.1	0.3	4.4	3.6	-1.7	1.9	5.5	8.9	7.9	5.5
For reference: actual growth in 2020–2021 on the respective month of 2019–2020																		
Oct 20	-5.0		-5.7		-8.8	-9.3	-3.0	-3.2	-3.4	-4.6	1.7	-1.2	-12.7	-12.6	1.7	2.4	2.4	-7.5
Nov 20	-1.0		-2.5		-7.3	-7.8	3.7	2.1	-2.8	-3.9	0.0	-2.3	-7.9	-6.8	-0.8	-0.9	23.8	22.0
Dec 20	3.8		1.2		-6.0	-7.8	9.9	7.5	6.1	6.5	0.4	-2.4	-7.6	-6.0	-1.5	-1.7	21.1	12.4
Jan 21	-2.2		-1.3		-7.4	-7.9	-0.3	1.7	7.4	11.2	-1.8	-2.6	-8.1	-6.9	-2.4	-1.8	-9.9	3.1
Feb 21	-3.6		-2.9		-9.2	-9.5	-1.9	-0.7	8.0	12.7	-2.3	-3.3	-9.5	-7.7	-3.2	-3.3	3.7	5.9
Mar 21	1.6		1.5		-4.6	-5.0	4.6	4.8	9.3	11.8	0.7	1.0	-3.7	-3.1	-1.7	-0.9	8.4	7.2

**Note.** In the time spans under review, the series of the Rosstat and the NRU HSE chain indexes of IIP, as well as the NRU HSE chain IIP for manufacturing are identified as stationary processes around the trend with an endogenous structural change; the series of the Rosstat and the NRU HSE chain IIPs for manufacturing, for primary metals and fabricated metal products, as well as the NRU HSE chain IIP for mining and Rosstat chain IIP for machinery and equipment are identified as stationary processes around the trend with two endogenous structural changes. The time series of other chain indexes are stationary at levels.

As seen in *Table 1*, the Rosstat industrial production index average<sup>2</sup> gain in October 2021 – March 2022 compared to the same period of the previous year comes to 3.9% in the industry as a whole. The NRU HSE industrial production index comes to 2.4%. At year-end 2021, the projected growth of the Rosstat IPI will come to 4.3%, the NRU HSE IPI will come to 3.6%.

The average monthly gain in the Rosstat and the NRU HSE industrial production indexes for mining and quarrying amounts to 3.9% and 3.9% respectively in October 2021 – March 2022.

The average gain in the Rosstat industrial production index for manufacturing industry in October 2021 – March 2022 amounts to 4.2% compared to the same period of the previous year and the NRU HSE industrial production index for manufacturing industry comes to 3.0%. The monthly gain in the industrial production index for production of food products will average 4.9% and 4.5% for the Rosstat and the NRU HSE indexes, respectively. The production of coke and petroleum products average gain is forecast at 3.4% and 7.7% for the Rosstat and the NRU HSE indexes, respectively. The average monthly change in the industrial production index for primary metals and fabricated metal products for October 2021 – March 2022 computed by Rosstat and the NRU HSE constitutes 4.6% and 7.8%, respectively. Manufacturing of machinery and equipment is forecast to average at 11.0% and 8.3% for the Rosstat and the NRU HSE indexes, respectively.

The average gain in the Rosstat industrial production index for electricity, gas and water supply; for air conditioning for October 2021 – March 2022 constitutes 3.8% in comparison with the same period of the previous year; the same indicator for the NRU HSE industrial production index comes to 3.4%.

On average (according to types of economic activity) the Rosstat industrial production indexes will gain 2.7% in 2020 and the NRU HSE industrial production indexes – 4.7%.

<sup>1</sup> It is to be noted that for making of forecasts so-called “raw” indexes (without seasonal and calendar adjustment) were used and for that reason in most models existence of the season factor is taken into account and, as a consequence, the obtained outputs reflect the seasonal dynamics of the series.

<sup>2</sup> Average growth of industrial production indexes is the average value of these indexes for six months under review.

## FOREIGN TRADE INDEXES

### Retail Sales

This section (Table 2) presents forecasts of monthly retail sales made on the basis of monthly Rosstat data over January 1999 to September 2021.

As seen in Table 2, the average forecast gain in the monthly turnover for October 2021 – March 2022 against the corresponding period of 2020–2021 amounts to around 12.2%. The average forecast gain in the monthly real turnover for the period October 2021 – March 2022 compared to the same period of 2020–2021 constitutes 3.8%.

In 2021 y-o-y, growth of retail trade turnover is forecast at 10.6% in nominal terms, and real terms – at 9.0%.

## FOREIGN TRADE INDEXES

Model calculations of forecast values of the export, export to countries outside the CIS and the import, import from countries outside the CIS were made on the basis of the models of time series and structural models evaluated on the basis of the monthly data over the period from September 1998 to August 2021 on the basis of the data released by the Central Bank of Russia.<sup>1</sup> The results of calculations are presented in Table 3.

Table 3

### Calculations of forecast values of volumes of foreign trade turnover with countries outside the CIS

Month	Exports to all countries				Imports from all countries				Exports to countries outside the CIS				Imports from countries outside the CIS			
	Forecast values (billion USD a month)		Percentage of actual data in the respective month of the previous year		Forecast values (billion USD a month)		Percentage of actual data in the respective month of the previous year		Forecast values (billion USD a month)		Percentage of actual data in the respective month of the previous year		Forecast values (billion USD a month)		Percentage of actual data in the respective month of the previous year	
	ARIMA	SM	ARIMA	SM	ARIMA	SM	ARIMA	SM	ARIMA	SM	ARIMA	SM	ARIMA	SM	ARIMA	SM
Oct 21	47.6	48.5	166	169	27.3	28.2	125	129	41.1	40.2	173	169	25.5	24.2	130	123
Nov 21	47.2	49.0	157	163	29.5	28.1	130	123	41.8	43.2	164	170	25.1	23.9	123	117
Dec 21	48.6	51.0	135	142	31.5	28.3	126	113	43.0	44.5	140	145	26.6	24.1	118	107
Jan 22	39.3	43.2	147	162	26.2	25.0	148	142	35.0	37.5	152	162	21.4	22.9	136	145
Feb 22	45.6	47.8	151	158	30.1	27.8	143	132	39.5	42.6	152	164	24.4	24.4	129	129
Mar 22	51.5	51.4	142	142	34.1	30.5	132	118	44.0	47.1	142	152	27.6	27.0	118	116
For reference: actual values in respective months of 2020–2021 (billion USD)																
Oct 20	28.6				21.9				23.8				19.6			
Nov 20	30.2				22.8				25.5				20.5			
Dec 20	35.9				25.1				30.7				22.5			
Jan 21	26.7				17.7				23.1				15.8			
Feb 21	30.3				21.0				25.9				19.0			
Mar 21	36.3				25.9				31.0				23.3			

**Note.** Over the period from January 1999 to August 2021, the series of exports, imports, exports to the countries outside the CIS and imports from the countries outside the CIS were identified as stationary series in the first-order differences. In all the cases, seasonal components were included in the specification of the models.

<sup>1</sup> The data on the foreign trade turnover are calculated by the CBR in accord with the methods used to derive the balance of payment in prices of the exporter-country (FOB) in billion USD.

Table 2

### Calculations of forecast values of retail sales and real retail sales

Month	Forecast value according to ARIMA-model	
	Retail sales, billion RUB (in brackets – growth on the respective month of the previous year, %)	Real retail sales (as % of the respective period of the previous year)
Oct 21	3399.1 (11.9)	105.7
Nov 21	3386.5 (12.1)	106.8
Dec 21	3982.1 (10.6)	103.6
Jan 22	3157.5 (11.7)	99.6
Feb 22	3094.9 (11.2)	103.0
Mar 22	3540.3 (15.6)	104.3
For reference: actual values in the same months of 2020–2021		
Oct 20	3038.7	99.6
Nov 20	3021.1	97.6
Dec 20	3601.7	97.8
Jan 21	2826.5	100.5
Feb 21	2782.2	98.8
Mar 21	3061.3	96.8

**Note.** The series of retail sales and real retail sales over January 1999 – September 2021.

## MODEL CALCULATIONS OF SHORT-TERM FORECASTS...

Export, import, export outside the CIS and import from the countries outside the CIS are forecast to grow on average by 51.8%, 29.1%, 56.2% and 23.1%, respectively for October 2021 – March 2022 against October 2020 – March 2021. The average forecast trade balance volume with all countries for October 2021 – March 2022 will total \$112.1 bn, which corresponds to 2.1-fold increase against October 2020 – March 2021.

## PRICE DYNAMICS

### The Consumer and Producer Price Indexes

This section presents estimates of forecast values of the consumer and producer price indexes (including both the industry in general and some branch activities under the National Industry Classification Standard (NICS)) derived from time-series models from Rosstat data for the period from January 1999 to July 2021.<sup>1</sup> Table 4 presents the results of model calculations of forecast values from October of 2021 to March of 2022 by ARIMA models, structural models (SM) and models computed with the help of business surveys (BS).

Table 4  
Calculations of forecast values of price indexes

Month	The consumer price index (ARIMA)	The consumer price index (SM)	The consumer price index (FM)	Producer price indexes:														
				for industrial goods (ARIMA)	for industrial goods (BS)	for industrial goods (FM)	for mining and quarrying	for manufacturing	for utilities (electricity, water, and gas)	for food products	for textile and sewing industry	for wood products	for pulp and paper industry	for coke and refined petroleum	for chemical industry	for basic metals and fabricated metal	for machinery and equipment	for transport equipment manufacturing
Forecast values (% of the previous month)																		
Oct 21	100.7	100.7	100.5	101.0	100.4	100.8	102.1	102.7	99.7	100.0	100.7	104.8	101.8	102.7	102.5	100.7	100.3	100.6
Nov 21	100.8	100.8	100.4	101.4	100.2	100.7	102.0	102.6	99.3	100.0	100.7	104.3	103.1	102.5	102.2	101.8	100.2	100.4
Dec 21	100.9	100.7	100.4	101.4	99.6	100.8	99.0	102.8	100.3	100.0	100.8	104.0	101.6	98.7	101.3	101.8	100.3	101.1
Jan 22	101.3	100.6	100.5	101.6	100.4	100.5	101.9	103.0	100.9	100.1	100.7	103.7	102.7	98.1	100.8	100.6	101.5	101.4
Feb 22	100.9	100.5	100.5	101.4	100.4	100.6	101.3	103.1	102.8	100.2	100.8	104.1	102.5	102.5	100.4	100.6	100.6	101.0
Mar 22	100.8	100.4	100.4	101.3	100.6	100.8	101.8	103.1	100.6	100.2	100.8	103.6	101.8	102.4	100.2	102.3	100.7	101.2
Forecast values (% of December 2020/2021)																		
Oct 21	105.4	105.7	106.0	127.4	124.4	127.0	146.3	129.7	105.1	109.1	110.9	152.0	140.5	147.4	143.8	156.2	105.8	110.1
Nov 21	106.2	106.5	106.4	129.1	124.6	127.8	149.2	133.2	104.4	109.1	111.7	158.4	144.9	151.1	146.9	159.0	106.1	110.5
Dec 21	107.2	107.3	106.8	130.9	124.1	128.9	147.8	136.9	104.7	109.1	112.7	164.7	147.2	149.1	148.9	161.9	106.4	111.7
Jan 22	101.3	100.6	100.5	101.6	100.4	100.5	101.9	103.0	100.9	100.1	100.7	103.7	102.7	98.1	100.8	100.6	101.5	101.4
Feb 22	102.2	101.1	101.0	103.1	100.8	101.1	103.2	106.1	103.7	100.3	101.6	108.0	105.3	100.6	101.2	101.2	102.1	102.4
Mar 22	103.0	101.5	101.4	104.4	101.4	101.9	105.0	109.4	104.4	100.5	102.4	111.8	107.2	103.0	101.3	103.5	102.8	103.7
For reference: actual values in the same periods of 2020–2021 (% of December 2019–2020)																		
Oct 20	103.3			101.0			91.2	103.9	105.4	109.2	105.8	107.8	99.4	95.1	101.7	113.5	104.6	106.9
Nov 20	104.1			102.0			93.2	105.0	103.5	110.8	107.1	109.0	99.9	96.8	103.7	116.2	104.7	108.1
Dec 20	104.9			103.5			96.7	106.0	104.0	112.7	107.6	111.0	101.5	96.9	106.2	118.9	104.9	109.0
Jan 21	100.7			103.4			109.4	102.2	100.0	101.5	100.9	102.1	102.1	104.8	103.3	106.4	101.2	101.8
Feb 21	101.5			107.0			116.8	105.1	101.9	103.1	102.6	105.1	105.4	109.9	107.7	114.0	101.2	102.3
Mar 21	102.2			110.9			125.1	108.1	102.6	105.0	103.3	107.4	109.3	119.2	113.7	116.1	102.2	104.0

**Note.** Over the period from January 1999 to July 2021, the series of the chain producer price index for machinery are identified as a stationary process around the trend with two endogenous structural changes. The series of other chain price indexes are stationary at levels.

<sup>1</sup> Structural models were evaluated in the period from October 1998.

The forecast average monthly gain in the consumer price index will come to 0.7% in October 2021 – March 2022. The producer price index for industrial goods for the same period is forecast to grow on average at 0.8% per month. The annual gain of the consumer price index according to two models will come to 7.1%, the producer price index is forecast at 28.0%.

The producer price indexes are forecast to gain at an average monthly rate for October 2021 – March 2022: for mining and quarrying 1.3%, for manufacturing 2.9%, for utilities (electricity, gas, and water) 0.6%, for food products 0.1%, for the textile and sewing industry 0.8%, for wood products 4.1%, for pulp and paper industry 2.2%, for coke and refined petroleum 1.2%, for the chemical industry 1.2%, for primary metals and fabricated metal products 1.3%, for machinery and equipment 0.6%, and for transport equipment manufacturing 0.9%.

The average annual growth in producer price indexes by types of economic activity will average at 33.4%. At 2021-end, the maximum annual gain is forecast in wood working and wood products (64.7%) and the minimum – in supply of electricity, gas and water (4.7%).

**The Cost of the Monthly per Capita Minimum Food Basket**

*This section presents calculations of forecast values of the cost of the monthly per capita minimum food basket over October of 2021 to March of 2022. The forecasts were estimated by time series from Rosstat data for January 2000 to September 2021. The results are presented in Table 5.*

As can be seen from Table 5, the minimum set of food products’ cost is forecast to grow compared to the corresponding level of the previous year. Having said that, the minimum set of food products is forecast to average RUB 5,021. The minimum set of food products’ cost is forecast to grow on average at around 12.0% against the same period of last year. The annual gain in the minimum set of food products will amount to 12.1% in 2021.

**Indexes of Freight Rates**

*This section presents calculations of forecast values of freight tariff indexes on cargo carriage,<sup>1</sup> made on the basis of time-series models evaluated on the Rosstat data over the period from September 1998 to July 2021. Table 6 shows the results of model calculations of forecast values in the October of 2021 to March of 2022. It should be noted that some of the indexes under review (for instance, the index of pipeline tariff) are adjustable ones and for that reason their behavior is hard to describe by means of the time-series models. As a result, the future values may differ greatly from the real ones in case of the centralized increase in tariffs in the period of forecasting or in case of absence of such an increase in the forecasting period, but with it taking place shortly before the beginning of that period.*

Table 5  
The forecast of the cost of the monthly per capita minimum food basket

Month	Forecast values according to ARIMA-model (RUB)
Oct 21	4957.4
Nov 21	4965.8
Dec 21	4996.2
Jan 22	5004.3
Feb 22	5030.0
Mar 22	5172.5
For reference: actual values in the same months of 2020–2021 (billion RUB)	
Oct 20	4289.4
Nov 20	4363.8
Dec 20	4456.0
Jan 21	4507.4
Feb 21	4583.2
Mar 21	4712.0
Expected growth on the respective month of the previous year (%)	
Oct 21	15.6
Nov 21	13.8
Dec 21	12.1
Jan 22	11.0
Feb 22	9.7
Mar 22	9.8

**Note.** The series of the cost of the monthly per capita minimum food basket over the period from January 2000 to September 2021 are stationary in the first differences.

<sup>1</sup> The paper presents a review of the composite freight rate index on freight transport and the motor load freight rate index, as well as the pipeline rate index. The composite freight rate index is computed on the basis of the freight rate indexes by individual types of transport: rail, pipeline, shipping, domestic water-borne, and motor load freight and air service (for more detailed information, pls. refer, for instance, to: *Prices in Russia*. The Official Publication of Goskomstat of RF, 1998).

## MODEL CALCULATIONS OF SHORT-TERM FORECASTS...

According to the forecast findings for October 2021 – March 2022, the composite index of transport tariffs on freight carriage during six months under review will be declining at an average monthly rate of 0.9%. In October 2021, the seasonal decline in the index is expected at -4.6 p.p. Its annual gain in 2021 will come to 1.0%.

The index of motor freight tariffs will be declining during these six months at an average monthly rate of 0.01%. Its annual gain in 2021 is forecast at 0.7%.

The index of pipeline tariffs will be declining during the next six months at an average monthly rate of 0.8%. Its annual gain in 2021 will come to 2.6%.

Table 6

### Calculations of forecast values of freight tariffs indexes

Month	The composite index of transport tariff	The index of motor freight tariff	The index of pipeline tariff
Forecast values according to ARIMA-models (% of the previous month)			
Oct 21	95.4	99.8	98.2
Nov 21	99.9	99.8	100.6
Dec 21	99.9	99.7	99.9
Jan 22	99.9	101.2	97.6
Feb 22	99.9	99.7	98.3
Mar 22	99.9	99.7	100.5
Forecast values according to ARIMA-models (% of December of the previous year)			
Oct 21	101.2	101.2	102.1
Nov 21	101.1	100.9	102.7
Dec 21	101.0	100.7	102.6
Jan 22	99.9	101.2	97.6
Feb 22	99.7	100.9	95.9
Mar 22	99.6	100.6	96.4
For reference: actual values in the same period of 2020–2021 (% of the previous month)			
Oct 20	94.6	100.1	88.5
Nov 20	107.4	100.0	99.9
Dec 20	99.9	100.1	99.9
Jan 21	103.1	100.9	103.3
Feb 21	100.0	100.3	100.0
Mar 21	100.0	99.8	100.0

**Note.** Over the period from September 1998 to July 2021, the freight tariffs indexes were identified as stationary; the other series were identified as stationary over the period from September 1998 to July 2021, too; fictitious variables for taking into account particularly dramatic fluctuations were applied to all series.

### World Prices of Natural Resources

*This section presents estimates of average monthly values of Brent crude prices (US\$ per barrel), aluminum prices (US\$ per ton), gold prices (\$ per ounce), copper prices (US\$ per ton), and nickel prices (US\$ per ton) over October 2021 to March 2022 as were received on the basis of nonlinear models of time series evaluated on the basis of IMF data over the period from January 1980 to August 2021.*

The crude oil price is forecast to average around \$75.8 per barrel, which is above its corresponding year-earlier indexes on average by 45.8%. The aluminum prices are forecast to stay around \$2,700 per ton and their average forecast gain constitutes around 33.0% compared to the same level of last year. The gold price is forecast to average \$1,850 per ounce. The copper price is forecast to average \$9,751 per ton, and prices for nickel – around \$19,794 per ton. The average forecast price gain for gold comes to around 1.0%, increase in prices for copper – around 24.0%, increase in prices for nickel – 19.0% against the corresponding level of last year.

At year-end 2021 compared to the end of 2020, the forecast gain in the crude oil price will stand at 46.1%, aluminum price – 34.8%, copper price – 25.2% and nickel price – 18.5%. Annual forecast drop of gold prices will come to 0.9%.



## MONETARY INDEXES

Table 7

### Estimates of forecast values of world prices of natural resources

Month	Brent oil (\$ per barrel)	Aluminum (\$ per ton)	Gold (\$ per ounce)	Copper (\$ per ton)	Nickel (\$ per ton)
Forecast values					
Oct 21	73.98	2668	1825	9609	19086
Nov 21	74.63	2683	1835	9653	19507
Dec 21	75.68	2701	1839	9714	19656
Jan 22	76.26	2710	1853	9776	19960
Feb 22	76.85	2717	1868	9843	20193
Mar 22	77.35	2727	1883	9912	20360
Expected growth on the respective month of the previous year (%)					
Oct 21	97.5	43.9	-4.0	43.2	25.5
Nov 21	56.8	31.4	-1.5	27.6	21.5
Dec 21	46.1	34.8	-0.9	25.2	18.5
Jan 22	36.5	37.4	-0.8	25.1	12.9
Feb 22	16.2	25.6	3.3	9.5	8.8
Mar 22	21.7	24.3	6.9	12.5	26.2
For reference: actual values in the same period of 2020–2021					
Oct 20	37.46	1854	1900	6712	15210
Nov 20	47.59	2042	1863	7566	16053
Dec 20	51.8	2003	1856	7756	16588
Jan 21	55.88	1973	1867	7813	17675
Feb 21	66.13	2163	1808	8993	18563
Mar 21	63.54	2194	1762	8809	16128

**Note.** Over the period from February 1980 to August 2021, the series of prices of crude oil, nickel, gold, copper, and aluminum are series of DS type.

## MONETARY INDEXES

The future values of the monetary base (in the narrow definition: cash funds and the Fund of Mandatory Reserves (FMR) and  $M_2$  monetary aggregate over the period from October 2021 to March 2022 were derived from models of time-series of respective indexes calculated by the CBR<sup>1</sup> in the period from October 1998 to September 2021 for the monetary base and to August for  $M_2$  monetary aggregate. Table 8 presents the results of calculations of forecast values and actual values of those indexes in the same period of the previous year. It is to be noted that due to the fact that the monetary base is an instrument of the CBR policy, forecasts of the monetary base on the basis of time-series models are to a certain extent notional as the future value of that index is determined to a great extent by decisions of the CBR, rather than the inherent specifics of the series.

In October 2021 – March 2022, the monetary base in the period under review will be growing at an average monthly rate of 0.8%. In 2021, the annual gain of the monetary base will come to 8.9% according to forecasts. In the period under review, the  $M_2$  monetary aggregate index will be changing at an average monthly rate of 0.4%. The annual gain of the  $M_2$  index is projected at 6.7%.

Table 8

### The forecast of $M_2$ and the monetary base

Month	The monetary base		$M_2$	
	Billion RUB	Growth on the previous month, %	Billion RUB	Growth on the previous month, %
Oct 21	14307	0.6	59380	-0.4
Nov 21	14459	1.1	59597	0.4
Dec 21	14539	0.5	59942	0.6
Jan 22	15066	3.6	61170	2.0
Feb 22	14780	-1.9	60953	-0.4
Mar 22	14941	1.1	61169	0.4
For reference: actual value in the respective months of 2020–2021 growth on the previous month, %)				
Oct 20	0.8		1.3	
Nov 20	0.8		-0.3	
Dec 20	-0.1		0.4	
Jan 21	3.8		4.5	
Feb 21	-1.7		-1.8	
Mar 21	1.0		1.0	

**Note.** Over the period from October 1998 to September 2021, the time series of the monetary base were attributed to the class of series which are stationary in the first-order differences and have an explicit seasonal component and the time series of the  $M_2$  monetary aggregate from October 1998 to August 2021 was identified as a stationary series with an explicit seasonal component.

<sup>1</sup> Data for a specific month is given, as by the CBR, as of the beginning of the following month.

## MODEL CALCULATIONS OF SHORT-TERM FORECASTS...

Table 9

### The forecast of international reserves of the Russian Federation

Month	Forecast values according to ARIMA-model	
	Billion USD	Growth on the previous month, %
Oct 21	626.8	1.4
Nov 21	635.3	1.4
Dec 21	642.2	1.1
Jan 22	647.9	0.9
Feb 22	653.0	0.8
Mar 22	657.6	0.7
For reference: actual values in the same period of 2020-2021		
Oct 20	583.4	-1.8
Nov 20	582.8	-0.1
Dec 20	582.7	0.0
Jan 21	595.8	2.2
Feb 21	590.7	-0.9
Mar 21	586.3	-0.7

**Note.** Over the period from October 1998 to September 2021, the series of the gold and foreign exchange reserves of the Russian Federation were identified as stationary series in difference.

Table 10

### Forecasts of the USD/RUB and EUR/USD exchange rates

Month	The USD/RUB exchange rate (RUB per USD)		The EUR/USD exchange rate (USD per EUR)	
	ARIMA	SM	ARIMA	SM
Oct 21	70.90	70.90	1.16	1.16
Nov 21	70.68	70.91	1.16	1.16
Dec 21	70.76	70.84	1.15	1.17
Jan 22	71.04	71.16	1.15	1.17
Feb 22	71.18	71.26	1.15	1.17
Mar 22	71.42	71.53	1.15	1.17
For reference: actual values in the similar period of 2020-2021				
Oct 20	79.33		1.18	
Nov 20	75.86		1.20	
Dec 20	73.88		1.23	
Jan 21	76.25		1.22	
Feb 21	74.44		1.20	
Mar 21	75.70		1.18	

**Note.** Over the respective periods, the series under review were identified as integrated series of the first order with a seasonal component.

## INTERNATIONAL RESERVES

*This section presents the outputs of the statistical estimation of future values of the international reserves of the Russian Federation<sup>1</sup> as derived from time series modeling of gold and foreign exchange reserves from data released by the CBR over the period from October 1998 to September of 2021. That index is forecast without taking into account a decrease in the amount of reserves due to foreign debt payment and for that reason the values of the volumes of the international reserves in the months where foreign debt payments are made may be overestimated (or otherwise underestimated) as compared to actual values.*

Subsequent to the forecast findings for October 2021 – March 2022, international reserves will be growing at an average monthly rate of 1.0%. In 2021, international reserves are projected to gain 10.0%.

## FOREIGN EXCHANGE RATES

*The model calculations of prospective values of foreign exchange rates (RUB per USD and USD per euro) were derived from time series models (ARIMA) and structural models (SM) of the relevant indicators released by the Central Bank of Russia as of the last date of each month over the periods from October 1998 to September 2021 and from February 1999 to September 2021,<sup>2</sup> respectively.*

In October 2021 – March 2022, USD/RUB average exchange rate is forecast according to two models at RUB 71.05 per USD. Projected index will constitute RUB 70.80 per USD according to two models by the end of 2021.

Projected Euro/USD exchange rate over the period under review will average USD 1.16 per 1 euro. Projected index will constitute USD 1.16 per 1 euro according to two models by the end of 2021.

<sup>1</sup> The volume of the gold and foreign exchange reserves is presented as of the first day of the following month.

<sup>2</sup> The Bulletin uses the IMF data related to Euro/USD exchange rate for the period from January 1999 to August 2021, and on USD/RUB exchange rate from October 1998 to August 2021. Data for September 2021 were taken from the exchange rate website [www.oanda.com](http://www.oanda.com).

## LIVING STANDARD INDEXES

This section (Table 11) presents results of calculations of monthly forecast values of index of real wages, as well as quarterly forecast values of real disposable cash income and real cash income<sup>1</sup> obtained from time series models of respective indexes computed by Rosstat for the period from January 1999 to August 2021, as well as from Q1 2014 to Q3 2021. The above indexes depend to a certain extent on centralized decisions on raising wages and salaries to public sector workers, as well as on raising pensions, scholarships, and allowances; this introduces some change in the dynamics of the indexes under review. Consequently, future values of the indexes of real wages and real disposable cash income that are either considerably higher or lower than the previous ones due to such decisions may differ greatly from those which are implemented in reality.

Table 11  
Forecast of real wages

Month	Real accrued wages
Forecast values according to ARIMA-models (as % to the respective month of 2020–2021)	
Oct 21	102.2
Nov 21	102.7
Dec 21	103.2
Jan 22	103.7
Feb 22	104.1
Mar 22	104.5
For reference: actual values in the respective period of 2020–2021 (as % to the same period of 2019–2020)	
Oct 20	100.5
Nov 20	100.2
Dec 20	104.6
Jan 21	100.1
Feb 21	102.0
Mar 21	101.8

**Note.** For calculation purposes real wages in base form were used (January 1999 was adopted as a base period). Over the period from January 1999 to August 2021 those series were attributed to the class of processes, which are stationary in differences and have an explicit seasonal component.

Table 12  
Forecasts of living standard indexes

Period	Real disposable cash income	Real cash income
Forecast values according to ARIMA-models (as % to the corresponding quarter of 2019/2020)		
Q4 2021	102.1	103.2
Q1 2022	99.2	101.2
For reference: actual values for the respective period of 2020 (in % to the same period of 2019)		
Q4 2020	98.8	99.0
Q1 2021	96.3	96.5

The results presented in Table 11, project increase in real wages. The average monthly growth in real wages is expected at 3.4% compared to the same period of the previous year. At the year-end 2021, projected growth in real wages will come to 3.1%.

The results presented in Table 12 project growth in real disposable cash income by around 0.7%. At the same time, real cash income is projected to grow by 2.2% compared to the corresponding last year level. At the end of 2021, the forecast gain in real disposable cash income will come to 2.7% and real cash income will grow by 3.9% over 12 months.

## EMPLOYMENT AND UNEMPLOYMENT

For the purpose of estimating future values of employment (the number of the gainfully employed population) and unemployment (the total number of the unemployed), models of time series, evaluated over the period from October 1998 to June 2021 from monthly data released by Rosstat,<sup>2</sup> were used. Unemployment was also estimated from models with results from responses to business surveys.<sup>3</sup>

Potential logical inconsistencies<sup>4</sup> in forecasts of employment and unemployment, for which totals should be equal to the index of the gainfully employed population, may arise due to the fact that each series is

<sup>1</sup> Real cash income – a relative index which is calculated by means of division of the index of nominal size (i.e. which was formed in the period under review) of cash income of the population by the CPI. The real disposable cash income – is cash income less mandatory payments and contributions. (See: Rossiisky Statistichesky Ezhegodnik, Moscow, Rosstat, 2004, p. 212).

<sup>2</sup> The index is computed in accord with the methods of the International Labor Organization (ILO) and is given as of the month-end.

<sup>3</sup> The model is evaluated over the period from January 1999 to July 2021.

<sup>4</sup> For example, deemed as such a difference may be a simultaneous decrease both in employment and unemployment. However, it is to be noted that in principle such a situation is possible provided that there is a simultaneous decrease in the number of the gainfully employed population.

## MODEL CALCULATIONS OF SHORT-TERM FORECASTS...

forecast individually and not as a difference between the forecast values of gainfully employed population and another index.

Table 13

### Calculation of forecast values of employment and unemployment indexes

Month	Employment (ARIMA)		Unemployment (ARIMA)			Unemployment (BS)			
	Million people	Growth on the respective month of previous year (%)	Million people	Growth on the respective month of previous year (%)	% of the index of the number of the gainfully employed population	Million people	Growth on the respective month of previous year (%)	% of the index of the number of the gainfully employed population	
Oct 21	71.9	2.3	3.3	-29.6	4.6	3.4	-27.9	4.7	
Nov 21	72.1	2.0	3.3	-28.3	4.6	3.4	-25.4	4.7	
Dec 21	72.1	1.8	3.3	-26.0	4.5	3.4	-22.0	4.7	
Jan 22	71.4	1.1	3.3	-24.1	4.6	3.4	-20.2	4.8	
Feb 22	71.4	0.9	3.2	-23.3	4.5	3.4	-19.3	4.8	
Mar 22	71.6	0.8	3.2	-22.0	4.5	3.3	-18.3	4.6	
For reference: actual values in the same periods of 2020–2021 (million people)									
Oct 20	70.3								4.7
Nov 20	70.7								4.6
Dec 20	70.8								4.4
Jan 21	70.7								4.3
Feb 21	70.8								4.2
Mar 21	71								4.1

**Note.** Over the period from October 1998 to July 2021, the unemployment series is a stochastic process, which is stationary around the trend. The unemployment series is a stochastic process with first order integration. Both indexes include a seasonal component.

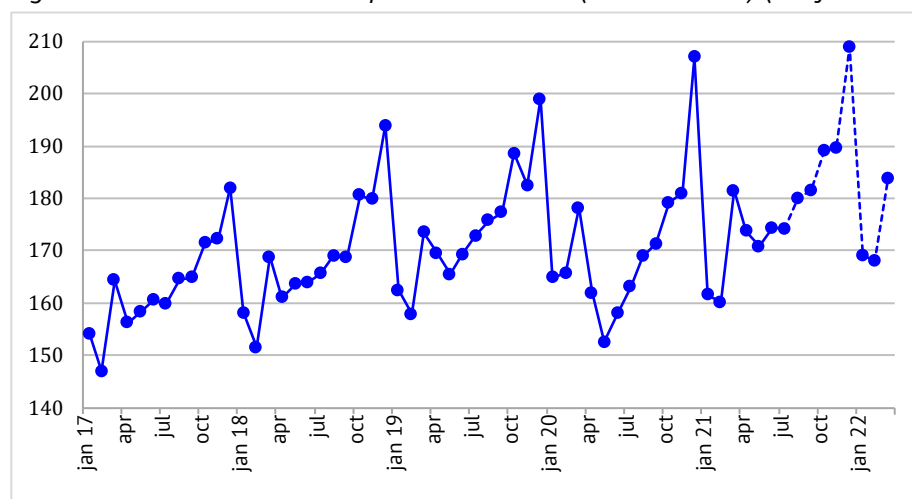
According to ARIMA-model forecast (Table 13), in October 2021 – March 2022, the increase in the number of employed in the economy will average 1.5% per month against the corresponding period of the previous year. At 2021-end, the projected number of employed in the economy will come to 72.1 mn.

The average monthly decline in the total number of unemployed is forecast at 23.9% per month against the same period of last year. The average number of unemployed at the end of 2021 is forecast at 3.4 mn.

## ANNEXES

### Annex 1. Diagrams of the Time Series of the Economic Indexes of the Russian Federation

Fig. 1a. The Rosstat industrial production index (ARIMA-model) (% of December 2001)



09/2021

Fig. 1b. The NRU HSE industrial production index (ARIMA-model) (% of January 2010)

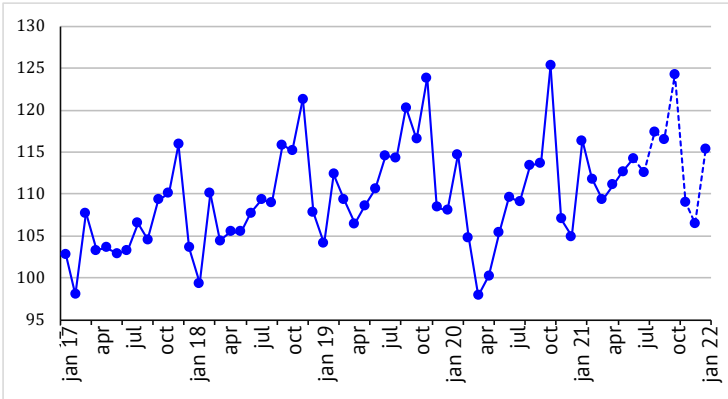


Fig. 2a. The Rosstat industrial production index for mining (% of December 2001)

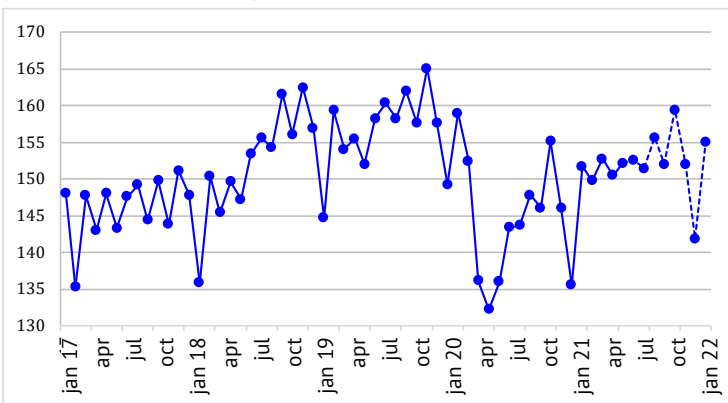


Fig. 2b. The NRU HSE industrial production index for mining (% of January 2010)

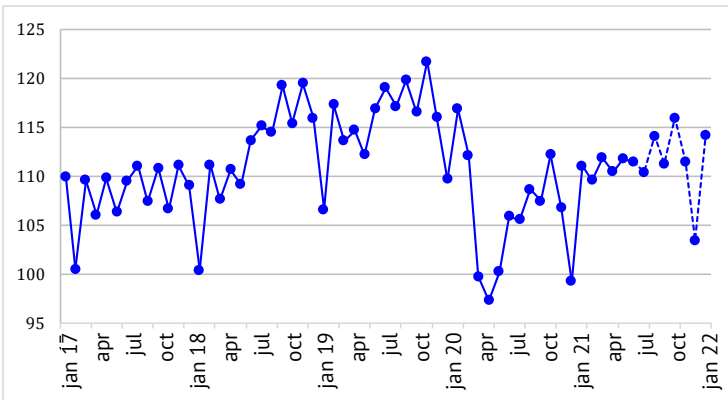
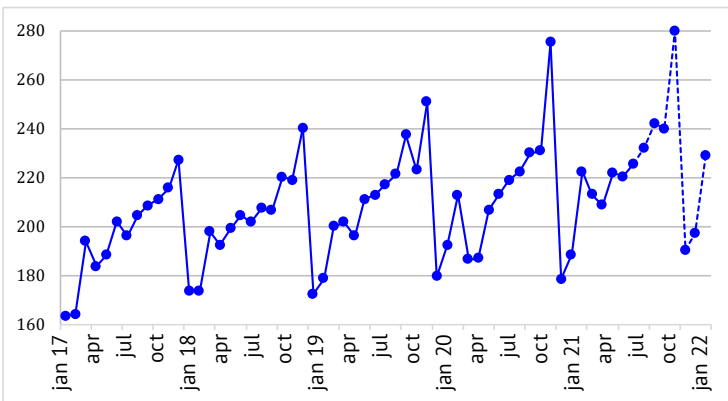


Fig. 3a. The Rosstat industrial production index for manufacturing (% of December 2001)



MODEL CALCULATIONS OF SHORT-TERM FORECASTS...

Fig. 3b. The NRU HSE industrial production index for manufacturing (% of January 2010)

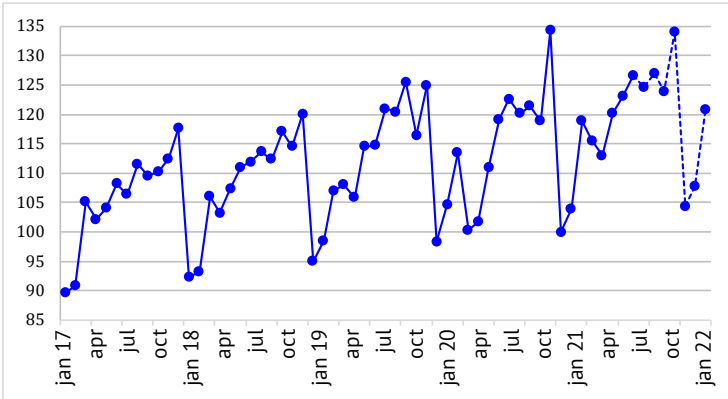


Fig. 4a. The Rosstat industrial production index for utilities (electricity, water, and gas) (as a percentage of that in December 2001)

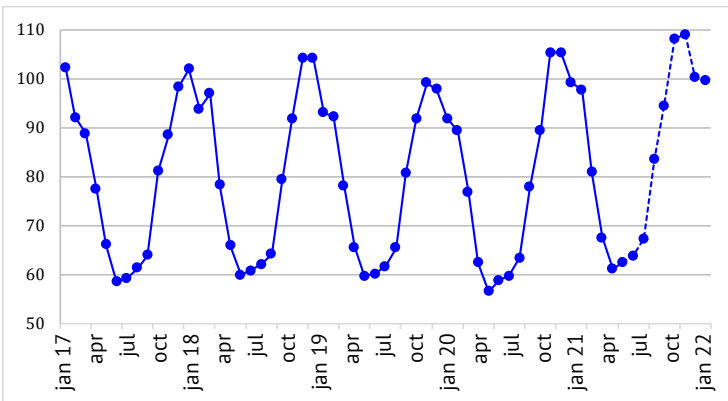


Fig. 4b. The NRU HSE industrial production index for utilities (electricity, water, and gas) (as a percentage of that in January 2010)

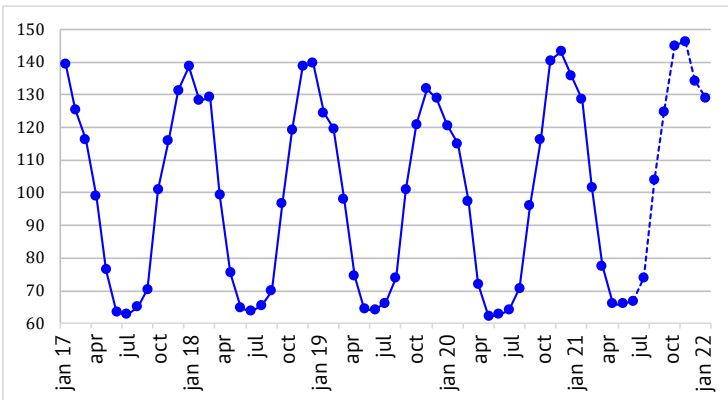
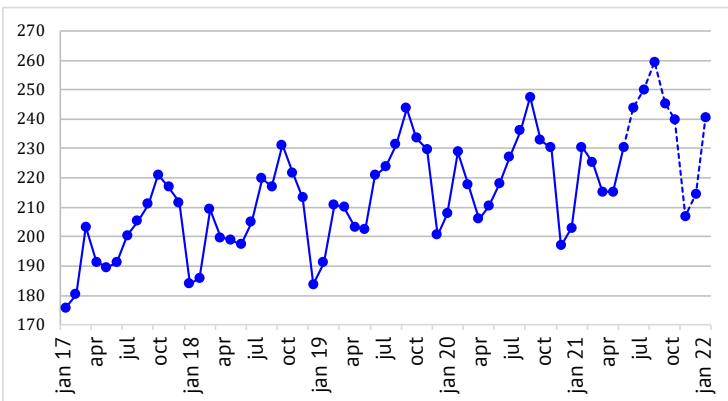


Fig. 5a. The Rosstat industrial production index for food products (as a percentage of that in December 2001)



09/2021

Fig. 5b. The NRU HSE industrial production index for food products (as a percentage of that in January 2010)

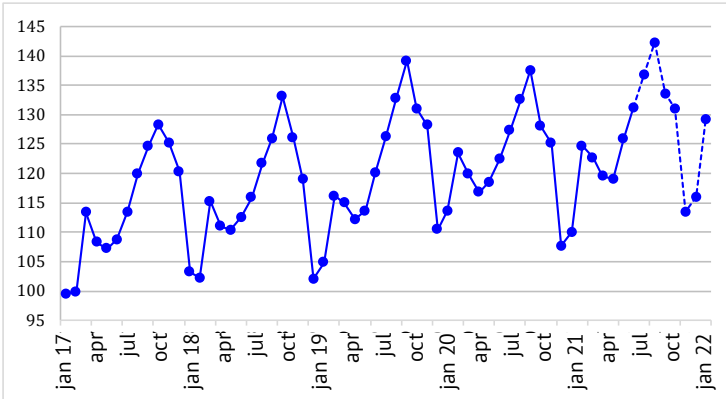


Fig. 6a. The Rosstat industrial production index for coke and petroleum (as a percentage of that in December 2001)

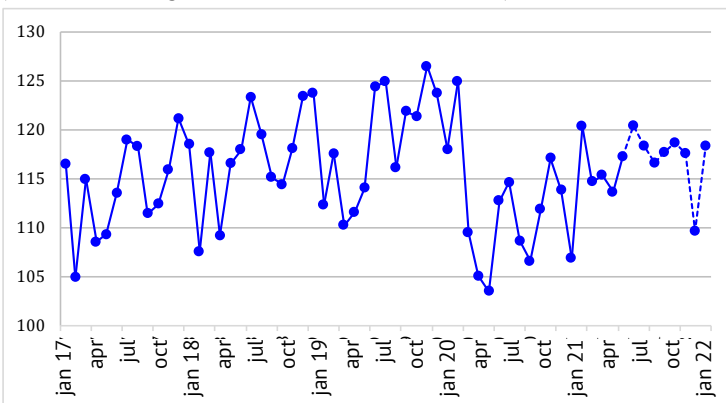


Fig. 6b. The NRU HSE industrial production index for petroleum and coke (as a percentage of that in January 2010)

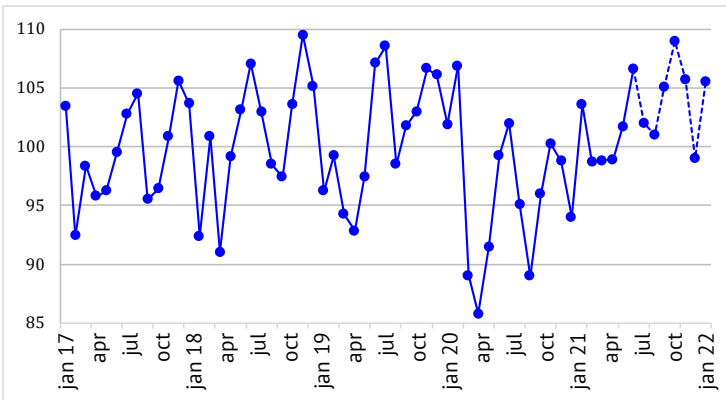
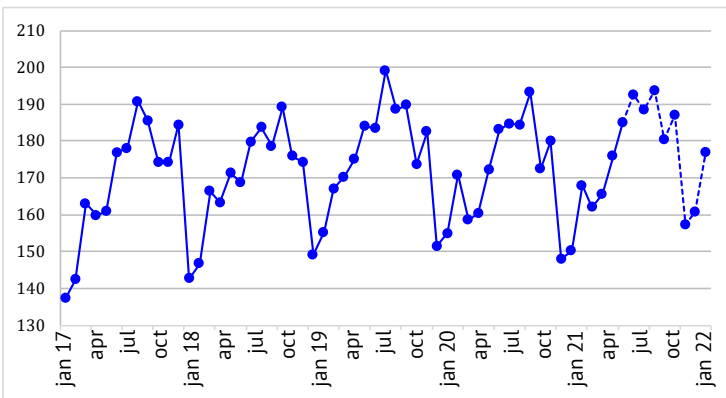


Fig.7a. The Rosstat industrial production index for primary metals and fabricated metal products (as a percentage of that in December 2001)



MODEL CALCULATIONS OF SHORT-TERM FORECASTS...

Fig. 7b. The NRU HSE industrial production index for primary metals and fabricated metal products (as a percentage of that in January 2010)

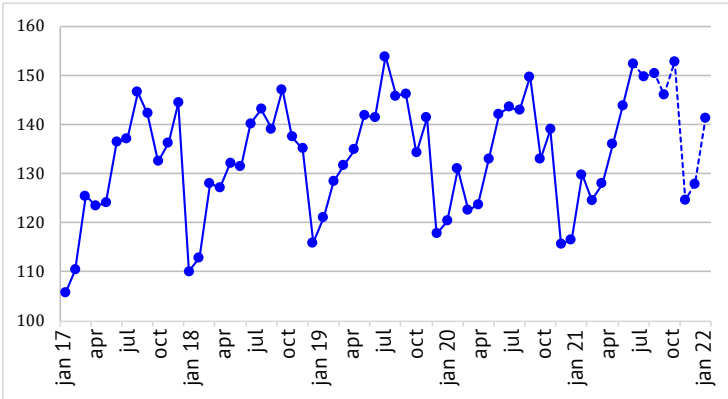


Fig. 8a. The Rosstat industrial production index for machinery (as a percentage of that in December 2001)

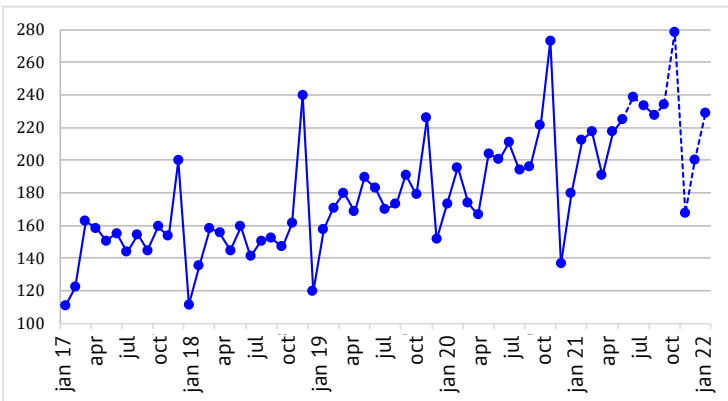


Fig. 8b. The NRU HSE industrial production index for machinery (as a percentage of that in January 2010)

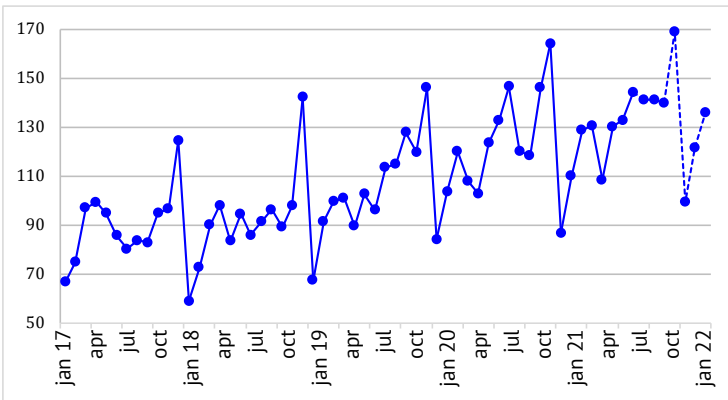
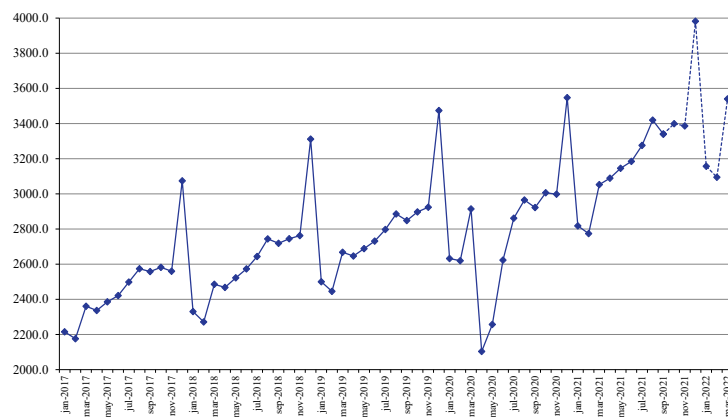


Fig. 9. The volume of retail sales (billion RUB)



09/2021



Fig. 9a. The real volume of retail sales (as a percentage of that in the same period of the previous year)

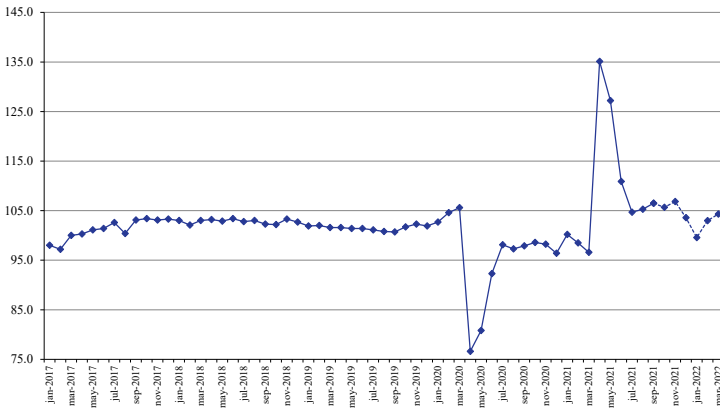


Fig.10. Export to all countries (billion USD)

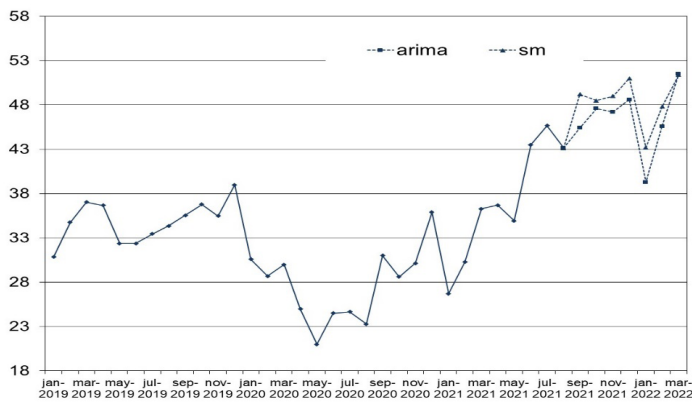


Fig. 11. Export to countries outside the CIS (billion USD)

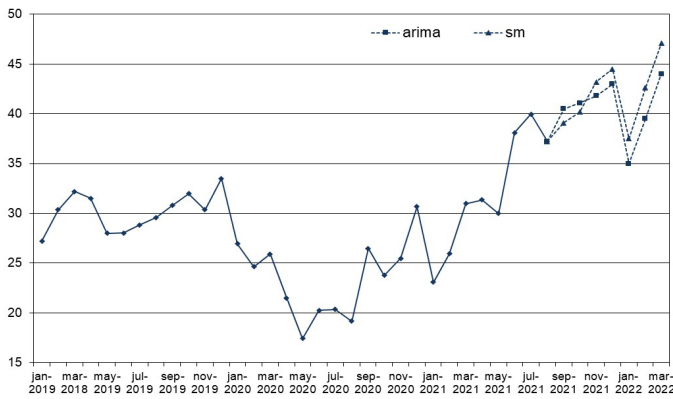
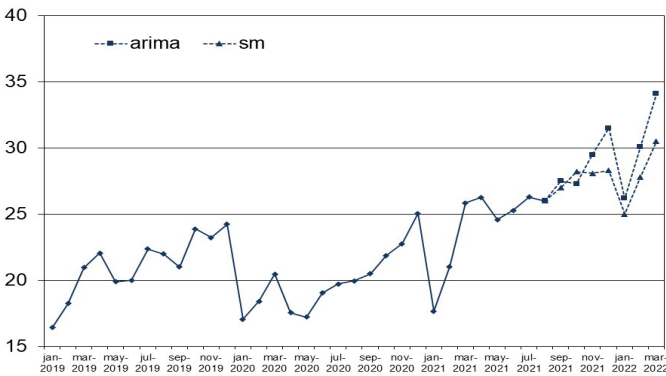


Fig. 12. Import from all countries (billion USD)



MODEL CALCULATIONS OF SHORT-TERM FORECASTS...

Fig. 13. Import from countries outside the CIS (billion USD)

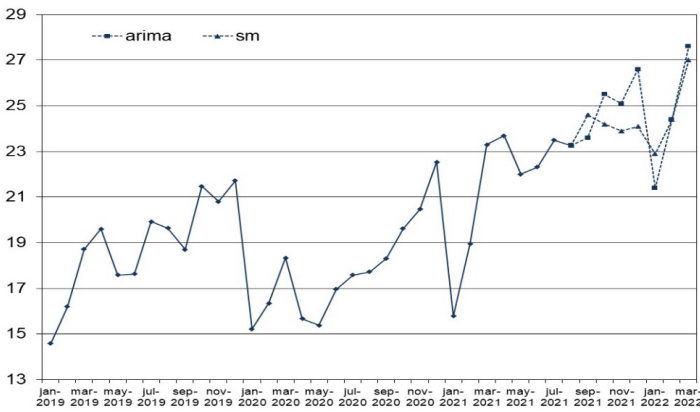


Fig. 14. The consumer price index (as a percentage of that in December of the previous year)

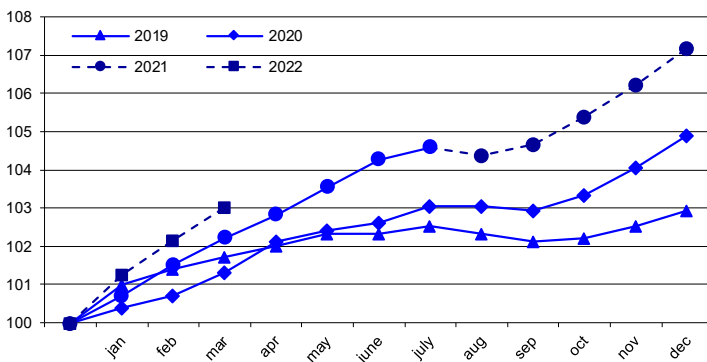


Fig. 14a. The consumer price index (as a percentage of that in December of the previous year) (SM)

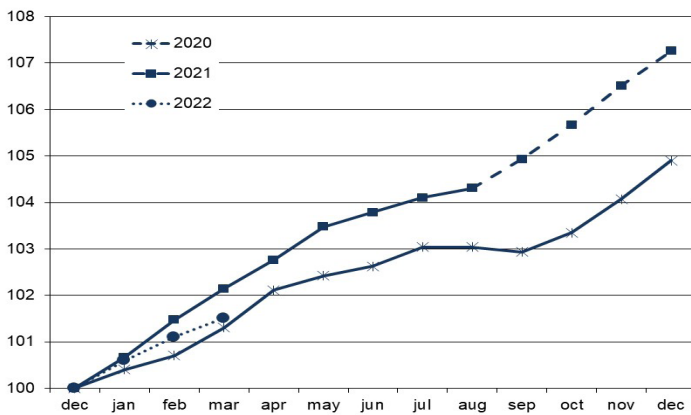
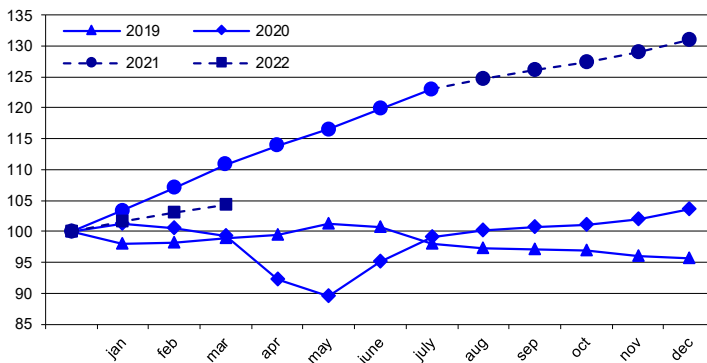


Fig. 15. The producer price index for industrial goods (as a percentage of that in December of the previous year)



09/2021

Fig. 16. The price index for mining (as a percentage of that in December of the previous year)

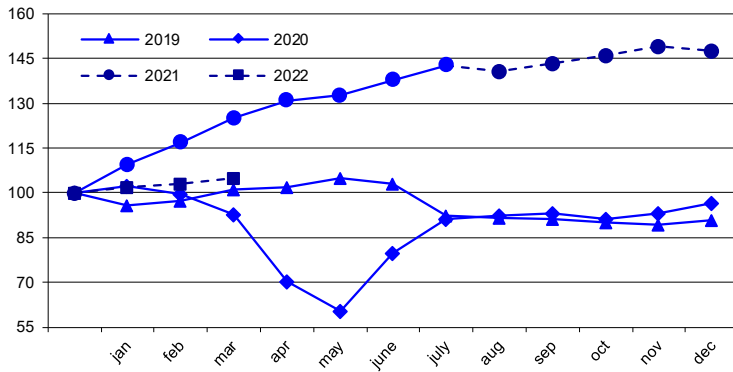


Fig. 17. The price index for manufacturing (as a percentage of that in December of the previous year)

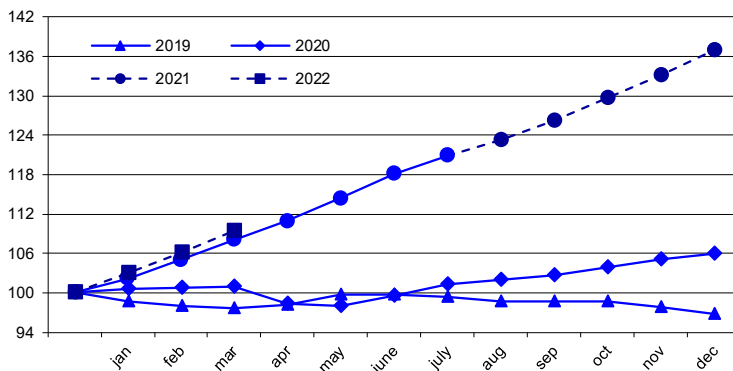


Fig. 18. The price index for utilities (electricity, water, and gas) (as a percentage of that in December of the previous year)

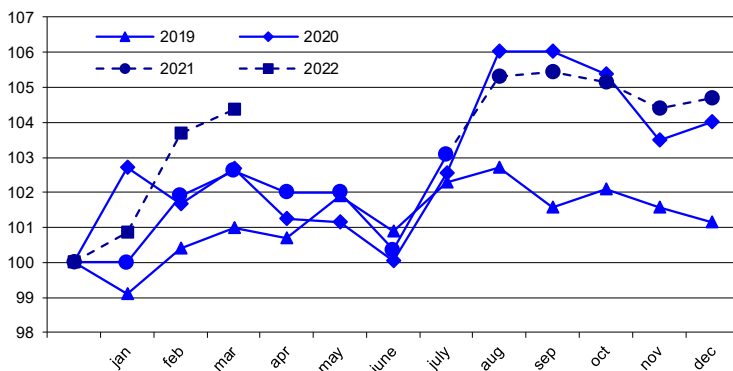
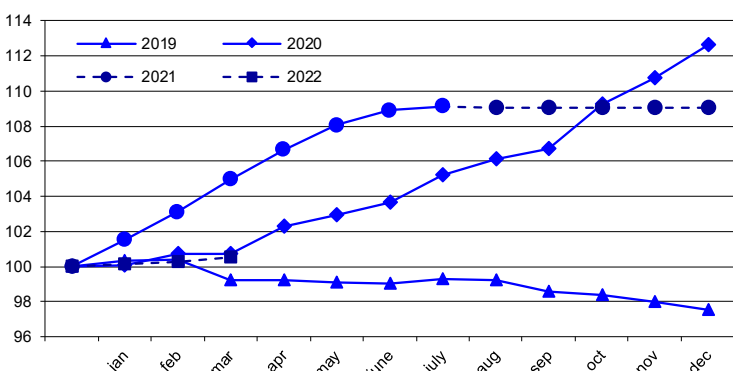


Fig. 19. The price index for food products (as a percentage of that in December of the previous year)



MODEL CALCULATIONS OF SHORT-TERM FORECASTS...

Fig. 20. The price index for the textile and sewing industry (as a percentage of that in December of the previous year)

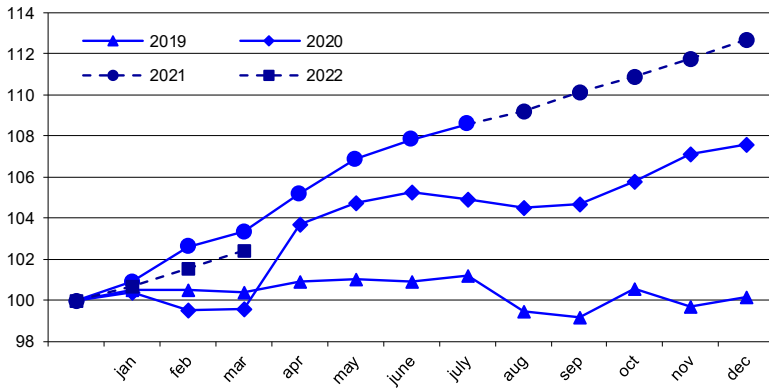


Fig. 21. The price index for wood products (as a percentage of that in December of the previous year)

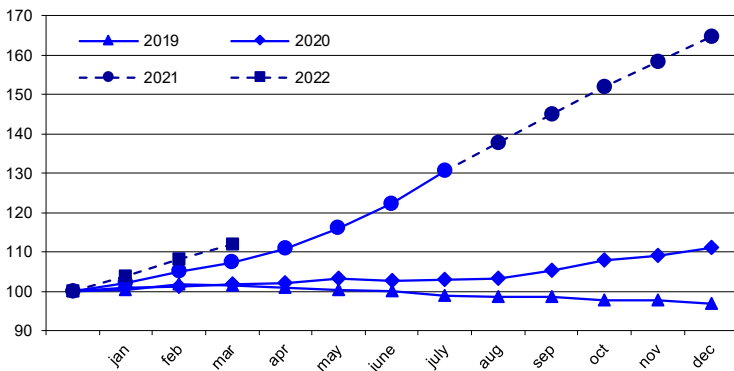


Fig. 22. The price index for the pulp and paper industry (as a percentage of that in December of the previous year)

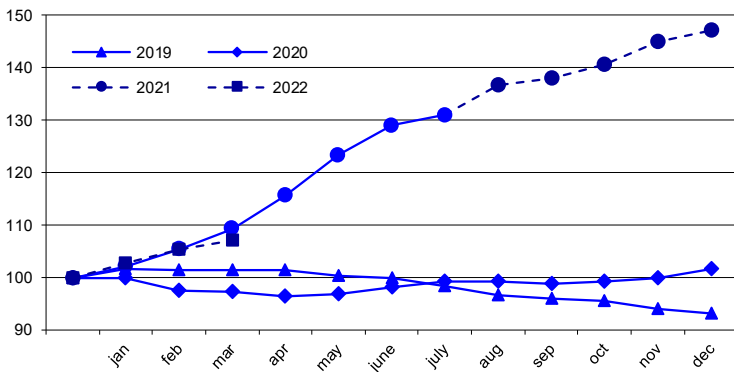
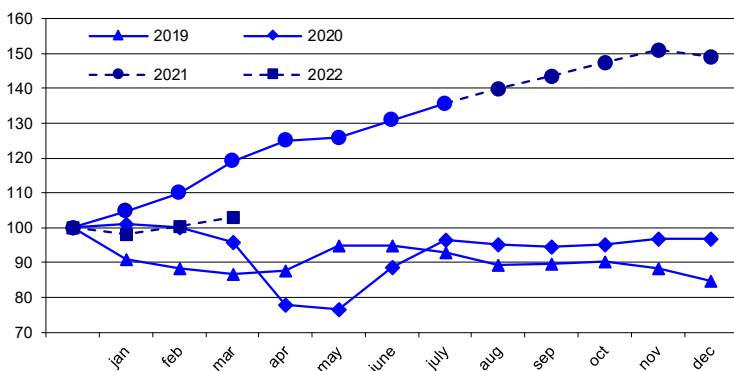


Fig. 23. The price index for coke and petroleum (as a percentage of that in December of the previous year)



09/2021

Fig. 24. The price index for the chemical industry (as a percentage of that in December of the previous year)

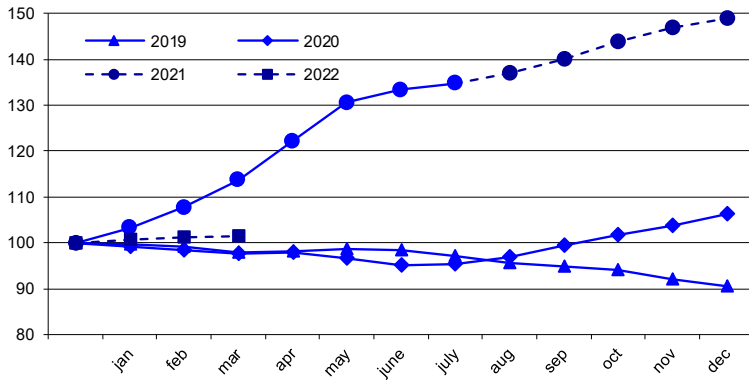


Fig. 25. The price index for primary metals and fabricated metal products (as a percentage of that in December of the previous year)

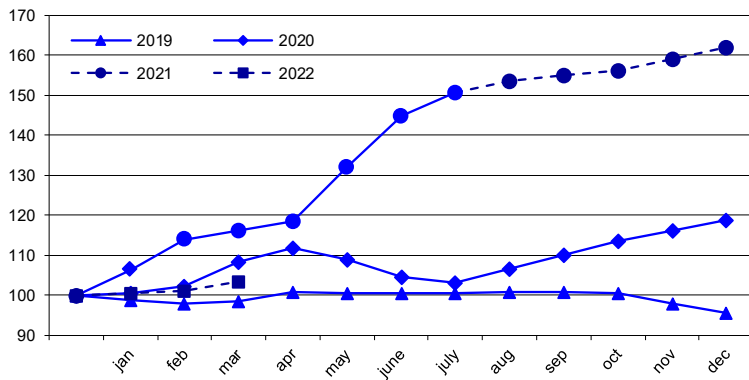


Fig. 26. The price index for machinery (as a percentage of that in December of the previous year)

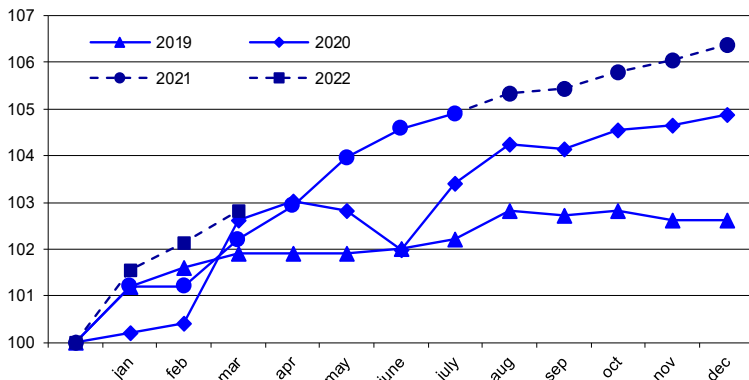
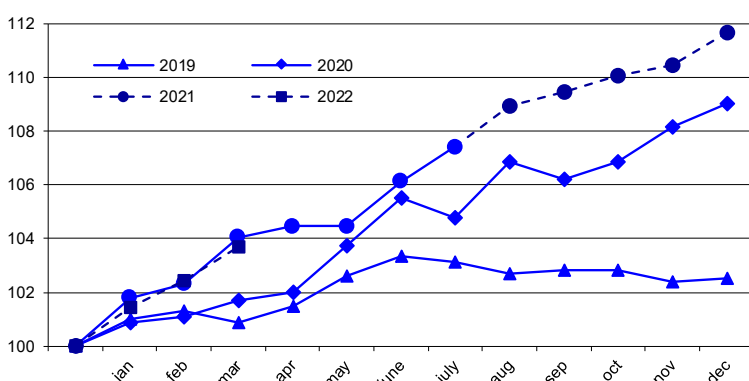


Fig. 27. The price index for transport equipment manufacturing (as a percentage of that in December of the previous year)



MODEL CALCULATIONS OF SHORT-TERM FORECASTS...

Fig. 28. The cost of the monthly per capita minimum food basket (RUB)

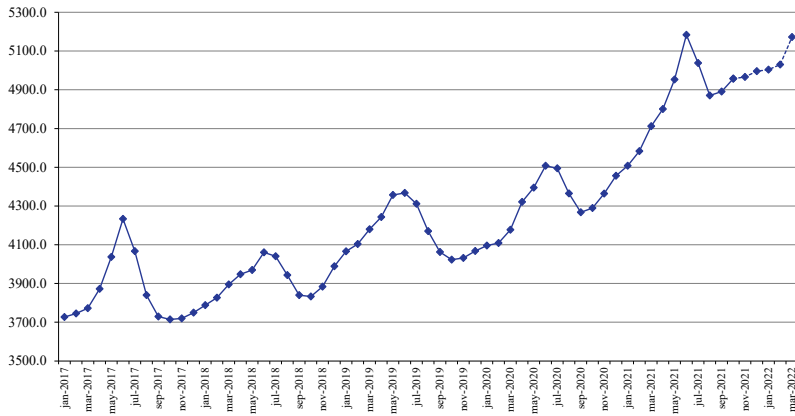


Fig. 29. The composite index of transport tariffs (for each year, as a percentage of that in the previous month)

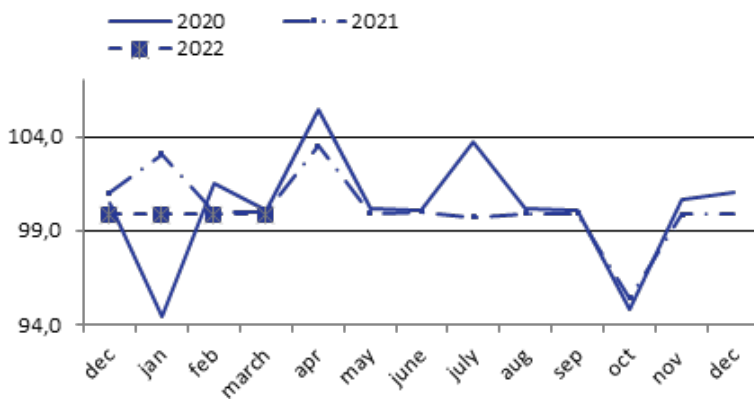


Fig. 30. The index of motor freight tariffs (for each year, as a percentage of that in the previous month)

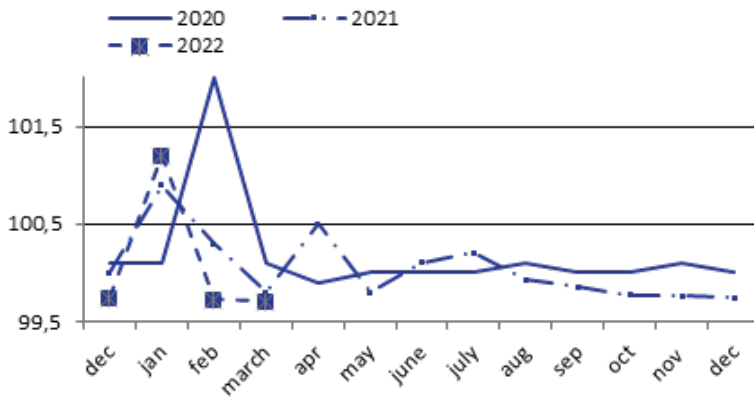
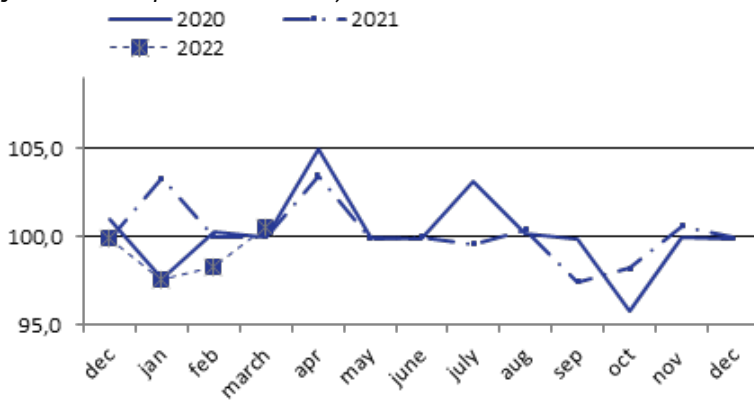


Fig. 31. The index of pipeline tariffs (for each year, as a percentage of that in the previous month)



09/2021

Fig. 32. The Brent oil price (\$ per barrel)

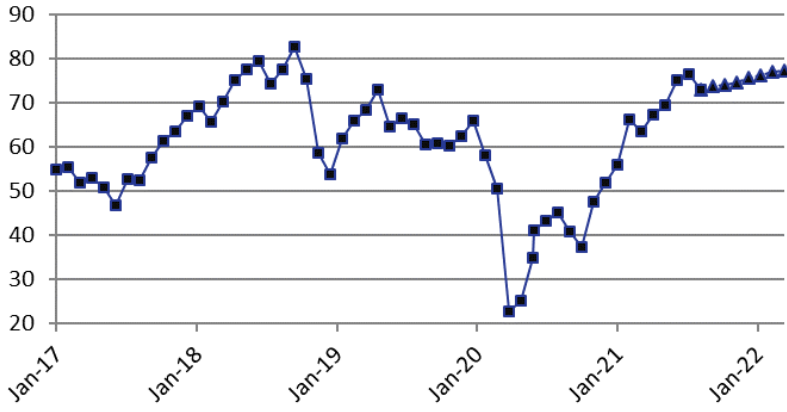


Fig. 33. The aluminum price (\$ per ton)

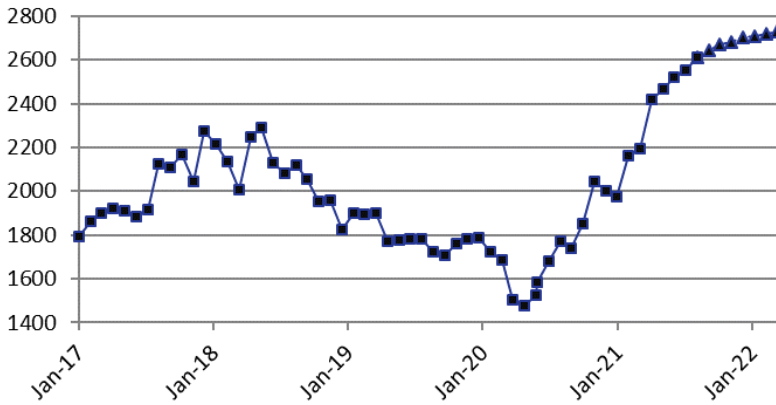


Fig. 34. The gold price (\$ per ounce)

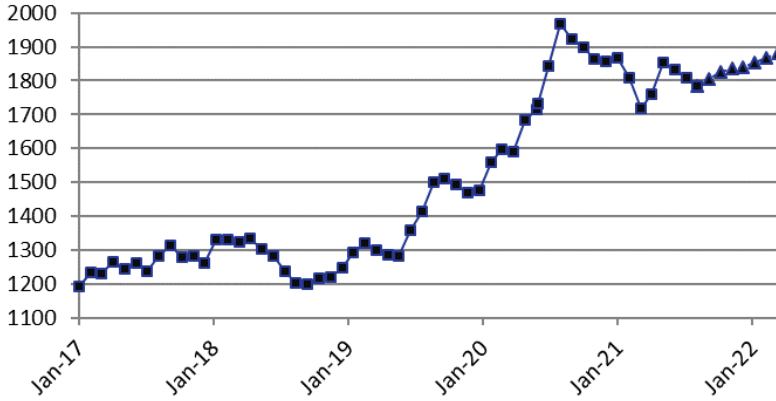
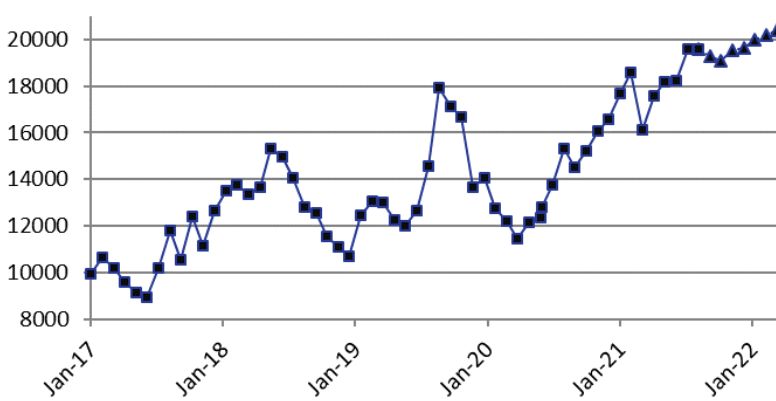


Fig. 35. The nickel price (\$ per ton)



MODEL CALCULATIONS OF SHORT-TERM FORECASTS...

Fig. 36. The copper price (\$ per ton)

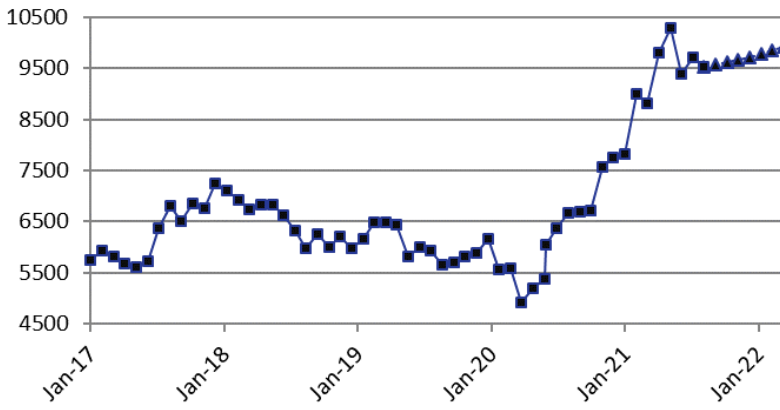


Fig. 37. The monetary base, billion RUB

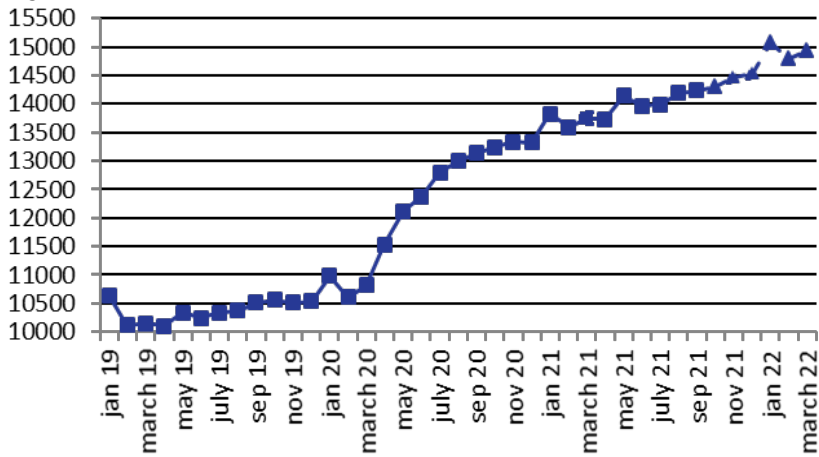


Fig. 38.  $M_2$ , billion RUB

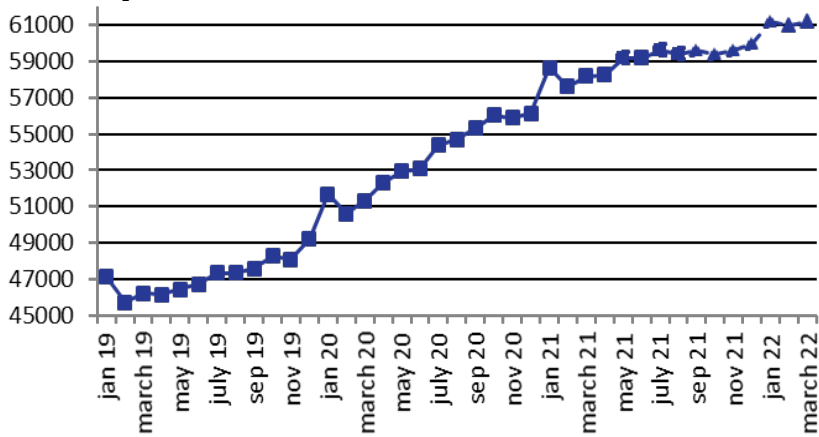


Fig. 39. The international reserves of the Russian Federation, million USD

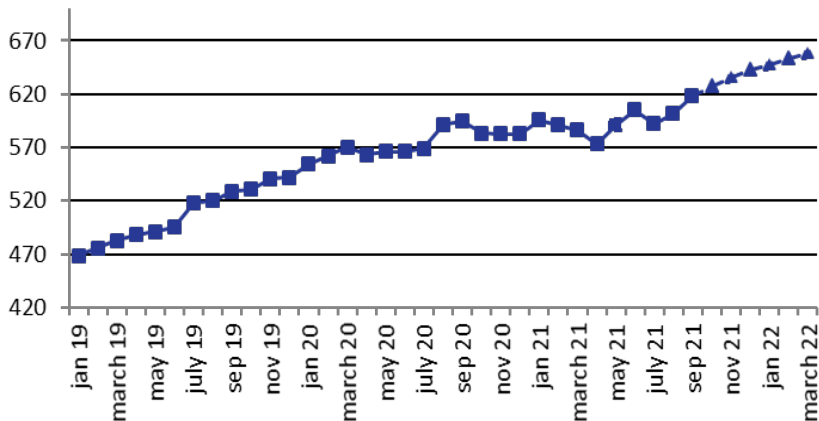




Fig. 40. The RUB/USD exchange rate

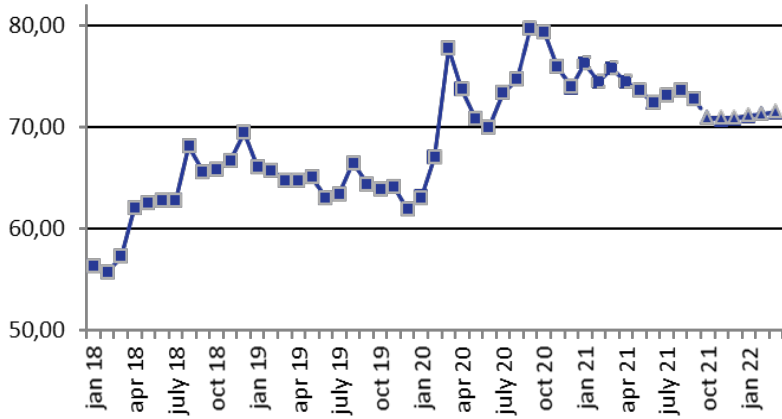


Fig. 41. The USD/EUR exchange rate

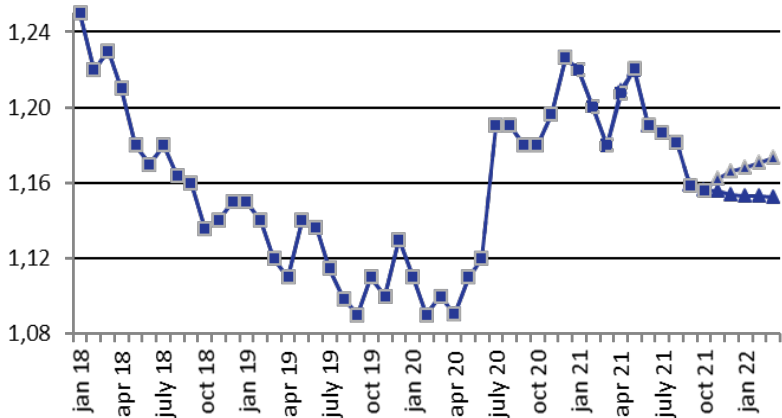


Fig. 42. Real disposable cash income (as a percentage of that in the same period of the previous year)

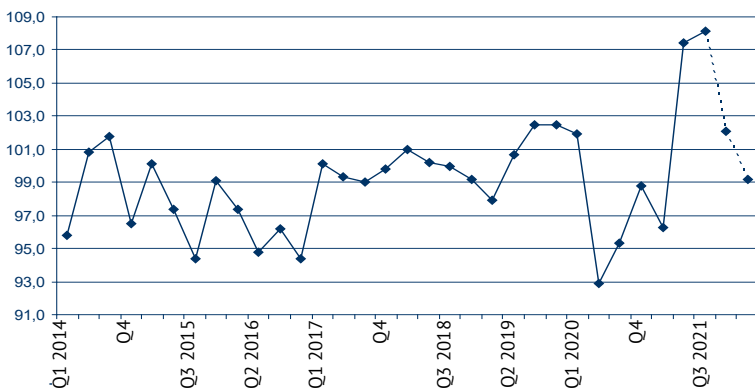
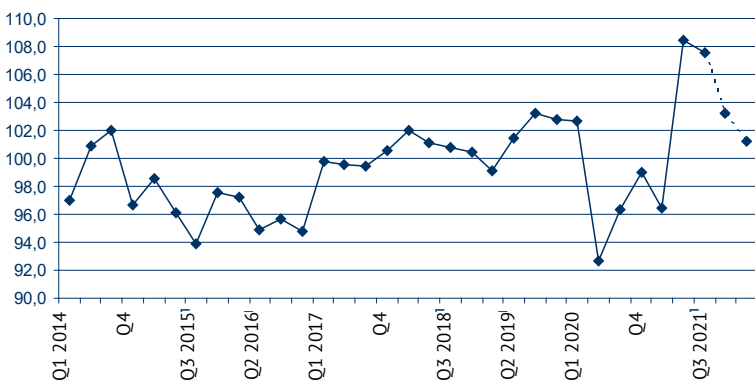


Fig. 43. Real cash income (as a percentage of that in the same period of the previous year)



MODEL CALCULATIONS OF SHORT-TERM FORECASTS...

Fig. 44. Real accrued wages (as a percentage of those in the same period of the previous year)

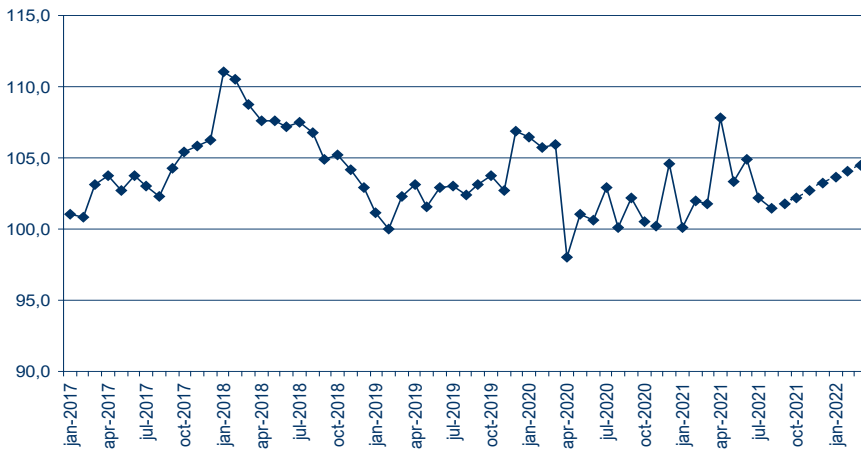
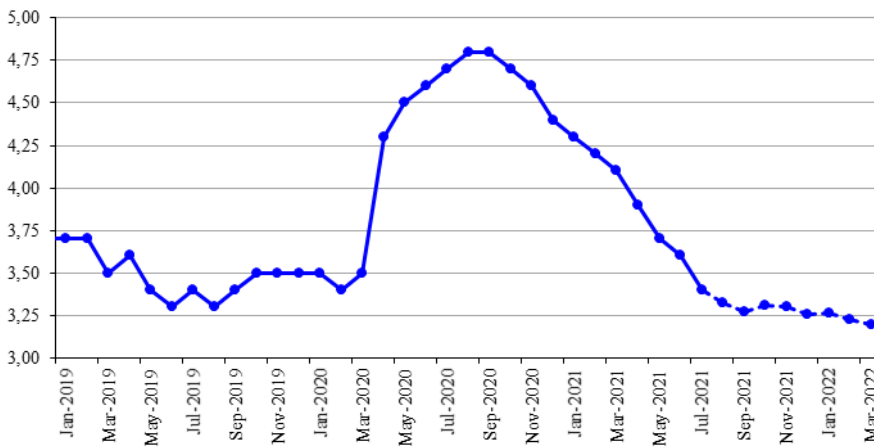


Fig. 45. Employment (million people)



Fig. 46. Unemployment (million people)



## Annex 2. Model calculations of short-term forecasts of social and economic indices of the Russian Federation: September 2021

Index	2021						2022		
	Jul	Aug	Sep	Oct	Nov	Dec	Jan	Feb	Mar
Rosstat IIP (growth rate, %)*	<b>11.8</b>	9.5	7.4	6.4	7.1	6.1	5.2	2.0	5.3
HSE IIP (growth rate, %)*	<b>12.1</b>	<b>10.5</b>	8.1	6.7	6.6	6.4	6.2	3.6	4.6
Rosstat IIP for mining (growth rate, %)*	<b>12.3</b>	12.3	11.7	8.3	6.6	6.8	4.4	4.0	4.2
HSE IIP for mining (growth rate, %)*	<b>12.9</b>	<b>14.0</b>	14.8	10.3	8.8	8.7	7.2	6.9	7.2
Rosstat IIP for manufacturing (growth rate, %)*	<b>11.4</b>	8.4	4.9	4.8	4.9	6.0	5.4	-0.6	2.8
HSE IIP for manufacturing (growth rate, %)*	<b>11.4</b>	<b>7.5</b>	3.2	4.5	5.0	5.5	4.1	-0.1	4.1
Rosstat IIP for utilities (electricity, water, and gas) (growth rate, %)*	<b>8.7</b>	7.0	2.4	2.3	2.0	3.4	1.2	-3.6	-2.0
HSE for utilities (electricity, water, and gas) (growth rate, %)*	<b>7.6</b>	<b>6.6</b>	4.0	3.5	2.5	5.2	3.8	-2.8	-4.3
Rosstat IIP for food products (growth rate, %)*	<b>4.8</b>	4.0	4.2	3.6	3.2	2.8	4.2	4.1	4.2
HSE IIP for food products (growth rate, %)*	<b>2.3</b>	<b>0.1</b>	2.4	2.3	2.8	3.4	5.5	4.6	3.3
Rosstat IIP for coke and petroleum (growth rate, %)*	<b>10.2</b>	10.5	1.3	1.0	7.2	6.1	3.6	1.0	3.4
HSE for coke and petroleum (growth rate, %)*	<b>15.2</b>	<b>7.3</b>	3.4	1.2	0.9	7.7	4.6	4.1	2.9
Rosstat IIP for primary metals and fabricated metal products (growth rate, %)*	<b>2.7</b>	0.7	-1.3	1.0	-0.8	-3.6	2.2	2.5	-0.5
HSE IIP for primary metals and fabricated metal products (growth rate, %)*	<b>2.7</b>	<b>1.7</b>	-2.3	1.0	-0.6	-5.1	2.3	1.7	0.3
Rosstat IIP for machinery (growth rate, %)*	<b>18.0</b>	3.8	1.0	4.9	7.2	3.6	-5.5	-3.1	1.0
HSE IIP for machinery (growth rate, %)*	<b>5.5</b>	<b>1.2</b>	5.3	5.1	6.2	5.5	-7.0	-1.9	5.3
Retail sales, trillion Rb	<b>3.15</b>	<b>3.19</b>	<b>3.28</b>	3.44	3.29	3.27	3.28	3.85	2.99
Real retail sales (growth rate, %)*	<b>27.2</b>	<b>10.9</b>	<b>4.7</b>	5.4	6.8	5.2	6.3	3.2	2.3
Export to all countries (billion \$)	<b>34.8</b>	<b>43.9</b>	43.9	45.5	47.5	48.0	48.2	49.7	41.2
Export to countries outside the CIS (billion \$)	<b>29.9</b>	<b>38.4</b>	39.3	40.6	43.4	42.4	42.5	45.1	35.9
Import from all countries (billion \$)	<b>24.6</b>	<b>25.6</b>	26.7	27.3	27.7	29.0	28.7	30.0	25.6
Import from countries outside the CIS (billion \$)	<b>22.0</b>	<b>22.6</b>	23.0	23.3	24.2	24.8	24.4	25.6	22.1
CPI (growth rate, %)**	<b>0.7</b>	0.6	0.5	0.1	0.3	0.5	0.6	0.6	0.7
PPI for industrial goods (growth rate, %)**	<b>2.3</b>	2.0	1.3	0.7	0.6	0.8	0.6	0.3	0.6
PPI for mining (growth rate, %)**	<b>1.4</b>	2.3	4.4	2.9	1.9	2.2	1.8	2.2	1.3
PPI for manufacturing (growth rate, %)**	<b>3.1</b>	2.7	2.5	2.1	2.6	2.8	2.6	2.9	2.8
PPI for utilities (electricity, water, and gas) (growth rate, %)**	<b>0.0</b>	-0.1	2.0	2.2	0.1	-0.3	-0.7	0.3	0.9
PPI for food products (growth rate, %)**	<b>1.3</b>	1.3	1.5	1.1	1.1	1.0	0.9	0.8	0.9
PPI for the textile and sewing industry (growth rate, %)**	<b>1.6</b>	1.0	0.8	0.7	0.9	0.8	0.8	0.9	0.8
PPI for wood products (growth rate, %)**	2.0	1.9	1.6	1.7	1.7	1.8	1.6	1.7	1.7
PPI for the pulp and paper industry (growth rate, %)**	2.0	4.4	2.8	2.1	3.2	2.5	2.2	2.9	2.8
PPI for coke and petroleum (growth rate, %)**	<b>0.7</b>	2.8	2.3	2.7	2.4	2.5	2.4	-1.4	-1.9
PPI for the chemical industry (growth rate, %)**	<b>6.9</b>	5.2	4.2	3.9	4.0	4.0	3.6	3.1	2.6
PPI for primary metals and fabricated metal products (growth rate, %)**	<b>11.5</b>	8.8	4.1	2.8	1.1	0.6	1.3	0.1	-2.6
PPI for machinery (growth rate, %)**	<b>1.0</b>	0.2	0.9	0.7	0.5	0.7	0.6	0.6	1.7
PPI for transport equipment manufacturing (growth rate, %)**	<b>0.0</b>	0.8	0.3	1.2	0.0	0.9	0.4	0.7	1.5
The cost of the monthly per capita minimum food basket (thousand Rb)	<b>4.95</b>	<b>5.18</b>	<b>5.04</b>	4.82	4.74	4.77	4.81	4.87	4.90
The composite index of transportation tariffs (growth rate, %)**	<b>-0.2</b>	<b>0.1</b>	<b>0.2</b>	-0.1	-0.1	-0.2	-0.2	-0.3	1.2
The index of pipeline tariffs (growth rate, %)**	<b>-0.1</b>	<b>0.0</b>	<b>-0.4</b>	0.4	-2.6	-1.8	0.6	-0.1	-2.4
The index of motor freight tariffs (growth rate, %)**	<b>-0.1</b>	<b>0.0</b>	<b>-0.3</b>	-0.1	-0.1	-4.6	-0.1	-0.1	-0.1
The Brent oil price (\$ a barrel)	<b>67.3</b>	<b>69.3</b>	67.6	68.1	68.6	69.4	70.0	69.9	70.1
The aluminum price (thousand \$ a ton)	<b>2.42</b>	<b>2.47</b>	2.55	2.60	2.65	2.65	2.67	2.69	2.70
The gold price (thousand \$ per ounce)	<b>1.76</b>	<b>1.85</b>	1.89	1.88	1.88	1.90	1.93	1.94	1.95
The nickel price (thousand \$ a ton)	<b>9.8</b>	<b>10.3</b>	10.6	10.8	10.9	11.0	11.0	11.1	11.2
The copper price (thousand \$ a ton)	<b>17.6</b>	<b>18.2</b>	18.0	17.3	17.9	18.2	18.7	18.8	18.8
The monetary base (trillion Rb)	<b>14.1</b>	<b>14.0</b>	14.2	14.2	14.4	14.4	14.6	14.7	15.2

## MODEL CALCULATIONS OF SHORT-TERM FORECASTS...

Index	2021						2022		
	Jul	Aug	Sep	Oct	Nov	Dec	Jan	Feb	Mar
M2 (trillion Rb)	<b>59.2</b>	<b>59.2</b>	59.2	59.2	59.2	59.2	59.2	59.5	60.8
Gold and foreign exchange reserves (billion \$)	<b>0.59</b>	<b>0.61</b>	<b>0.59</b>	0.59	0.58	0.58	0.59	0.59	0.59
The RUR/USD exchange rate (rubles per one USD)	<b>73.59</b>	<b>72.37</b>	<b>73.12</b>	73.29	73.75	73.91	74.24	74.41	74.69
The USD/EUR exchange rate (USD per one Euro)	<b>1.22</b>	<b>1.19</b>	<b>1.19</b>	1.18	1.19	1.19	1.19	1.19	1.19
Real accrued wages (growth rate, %)*	<b>3.3</b>	<b>4.9</b>	4.9	5.3	5.6	5.8	6.1	6.3	6.4
Employment (million people)	<b>71.6</b>	71.7	71.9	72.2	72.2	71.9	72.0	71.9	71.3
Unemployment (million people)	<b>3.7</b>	3.7	3.7	3.5	3.6	3.6	3.6	3.6	3.7

**Note.** Actual values are printed in the bold type

\* % of the respective month of the previous year

\*\* % of the previous month.

